

# Vashon Island School District

## Capital Projects Update

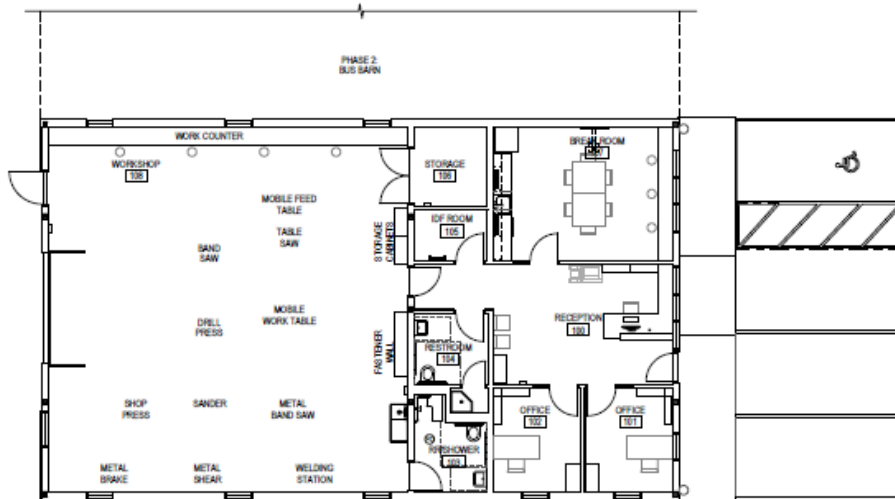
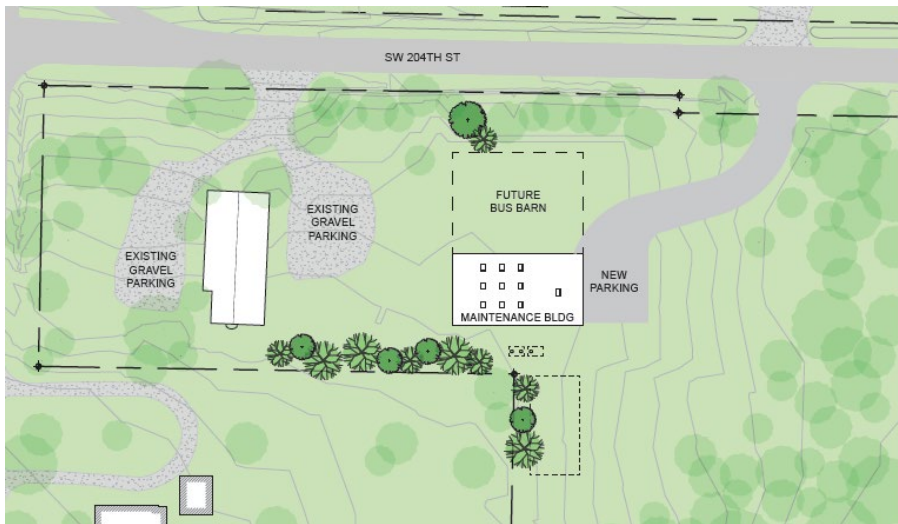
November 6, 2019

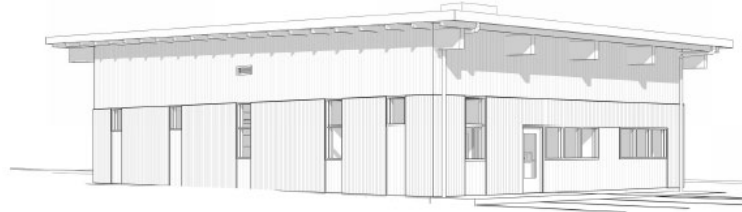
Project	Status	Funding
<b>Chautauqua Elementary</b> – all bond work is complete		
<b>McMurray</b> – all bond work is complete with the exception of the exterior paint. Options were reviewed with the Board in March of 2019 and the work is on hold.		
<b>Vashon Island High School Track, Field &amp; Grandstands</b>		
Turf & Track	<p>Retainage release for Field Turf has been approved and all work complete.</p> <p>The last of the equipment budget will be spent towards putting venting into the four new storage containers and a partial contribution to the new sound system planned for the Gym.</p>	2017 Bond & KCYFS Grant
Gym Maintenance	All work complete	Gym Reserves
<b>Vashon Island High School Campus– Other Projects</b>		
Building K Student Link	Retainage release process still underway with State agencies.	2017 Bond
Heat Pump Repair	<p>OSPI denied the District’s application for the emergency grant. Staff is working with Metrix Engineers and pricing the proposed solution with two additional mechanical engineers. Work is expected to take place over the February break.</p> <p>Metrix Engineers has met with District staff and outlined specific actions to be taken as the weather gets colder to help ensure the school stays warm that if the 4<sup>th</sup> compressor were to fail.</p>	OSPI Grant
<b>Maintenance Shop</b>		
New Building	<p>The Conditional Use Permit (CUP) was issued by the County and no appeals were made. Building and Mechanical permits were applied for in October and the first round of review comments are expected within 8 weeks of the date of submittal.</p> <p>Staff and the architect have been working through the final details. The architect and engineers are estimating the cost for the project with all design elements required by the County (frontage, drainage, etc.). It is likely there will be a series of additive alternates in addition to the base bid bring the project in on budget. When that list of alternates is available, staff will share it with the Board.</p>	2017 Bond



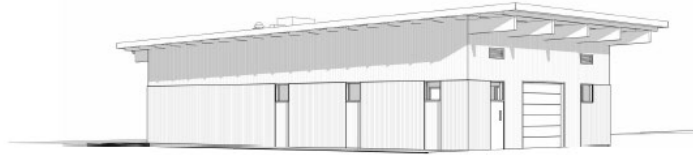
Three contractors, including one on-island, are aware of the project status and interested in bidding. Once the County's review comments have been received, bid documents will be finalized and we anticipate going to bid the first week of January with a construction start later in the spring. The architect is estimating a 6-month construction schedule.

The building is simple and functional. It is designed as wood frame post and beam construction, with metal siding and a single slope roof. The shop, associated restroom, storage areas, and mezzanine access are all sealed concrete. The transition between the shop and reception area, along with the break room will be linoleum. Reception and the offices are carpeted. Ceilings in reception and the shop are open to structure with exposed metal ductwork. It is a small but very functional building and a good first step in creating safe and appropriate space for the maintenance activities as well as the future location for the bus maintenance facility.





Perspective - NW Phase 1



Perspective - SE Phase 1



1 Exterior Elevation - North Phase 2  
1/8" = 1'-0"



2 Exterior Elevation - South Phase 2  
1/8" = 1'-0"



1 Exterior Elevation - East Phase 2  
1/8" = 1'-0"



2 Exterior Elevation - West Phase 2  
1/8" = 1'-0"



## Budget

We continue to track within the overall budget for all projects as of November 6, 2019. Note that all retainage dollars for the various projects are shown as paid, even if they are being held pending State approvals.

