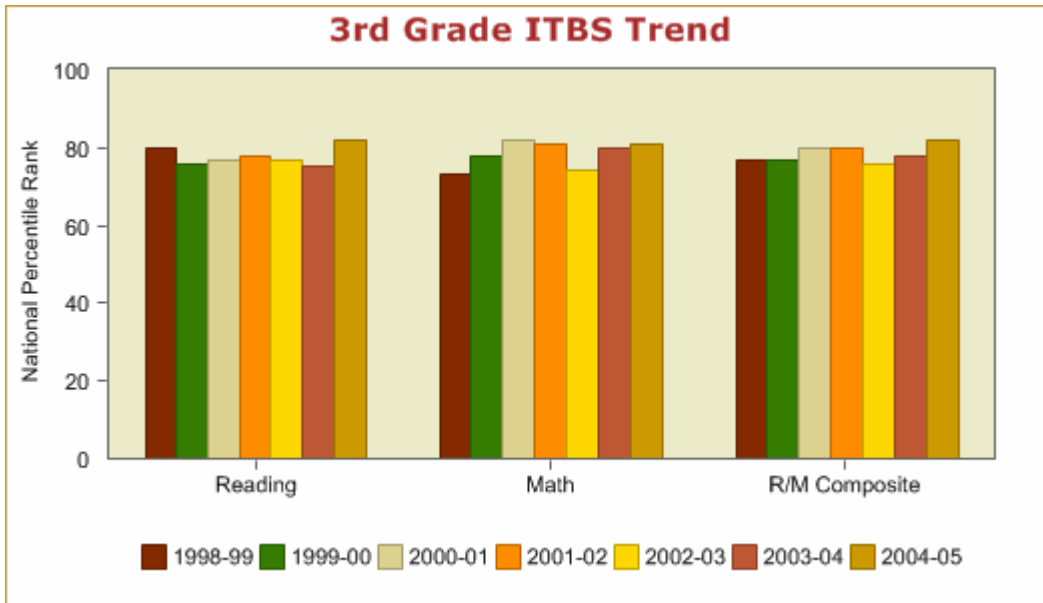


**ITBS/ITED Trend**

This displays student performance information for the Iowa Tests of Basic Skills (ITBS) at grades 3 and 6 and the Iowa Tests of Educational Development (ITED) at grade 9. This trend shows the National Percentile Rank (NPR).

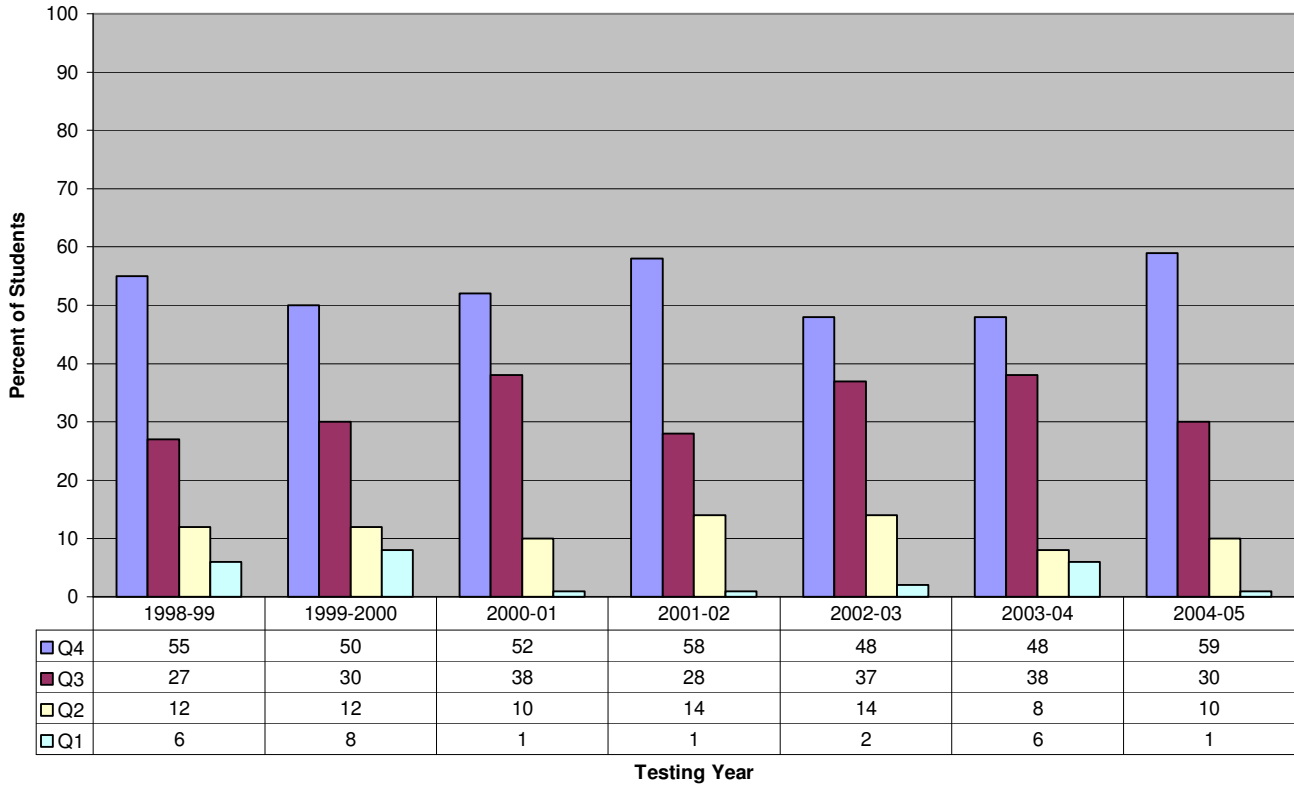


<b>Grade 3</b>	<b>1998-99</b>	<b>1999-00</b>	<b>2002-03</b>	<b>2003-04</b>	<b>2004-05</b>
Reading	80	76	77	75	82
Math	73	78	74	80	81
R/M Composite	77	77	76	78	82

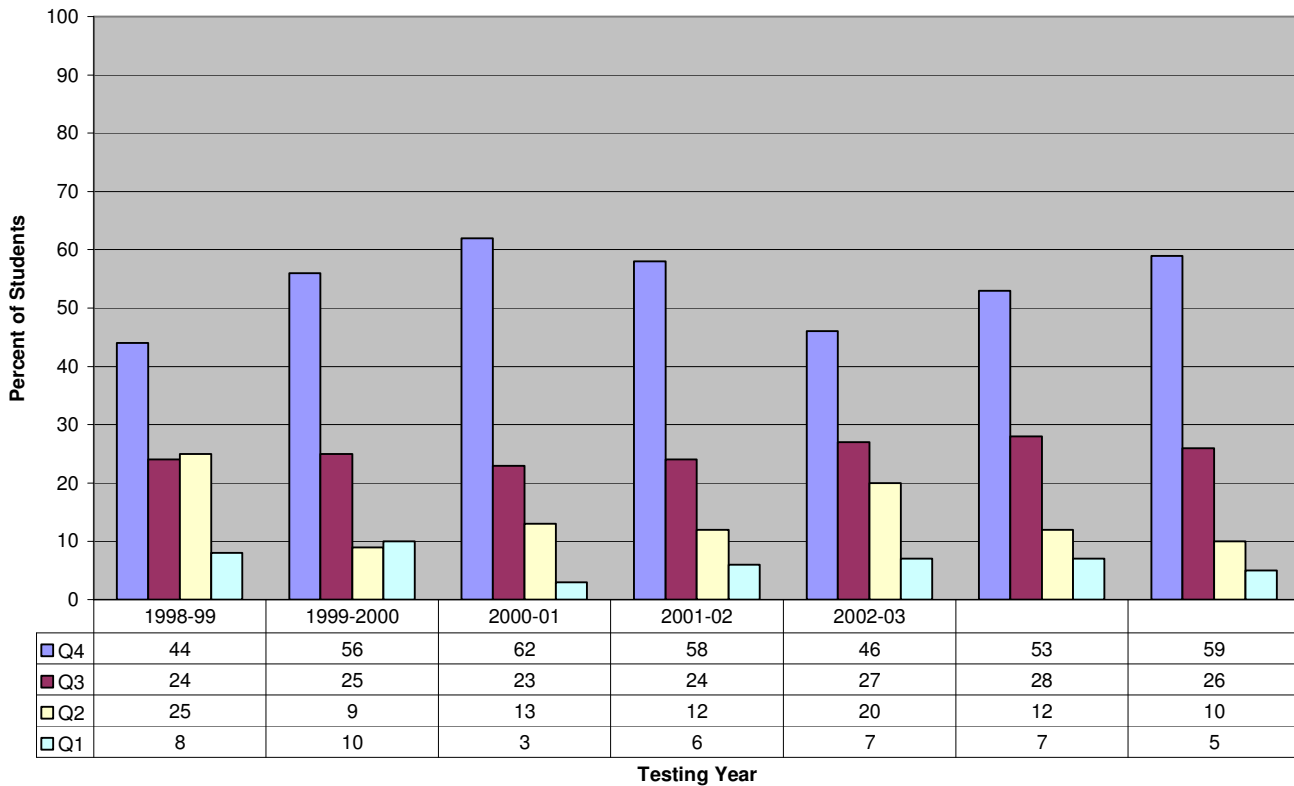
  

<b>3rd Grade ITBS</b>	<b>Reading</b>	<b>Mathematics</b>	<b>R/M Composite</b>
<b>National Percentile Rank (NPR):</b>	82	81	82
Number of Students Tested:	101	100	100
Percent Tested:	98%	97%	97%
<b>Percent Per Quartile:</b>			
Q4 (76th to 99th Percentile):	59%	59%	60%
Q3 (51st to 75th Percentile):	30%	26%	29%
Q2 (26th to 50th Percentile):	10%	10%	8%
Q1 (1st to 25th Percentile):	1%	5%	3%

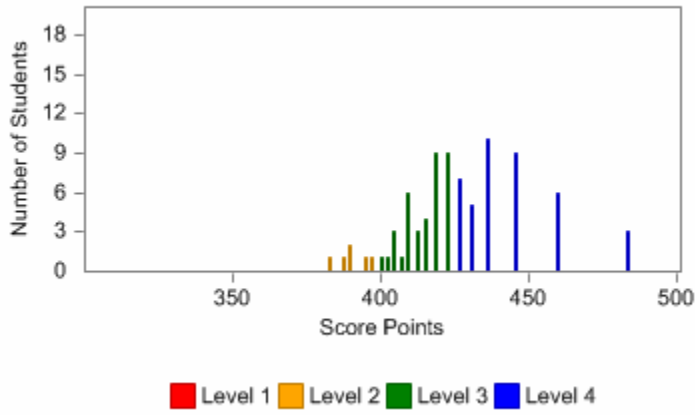
### 3rd Grade Reading Quartile Distribution



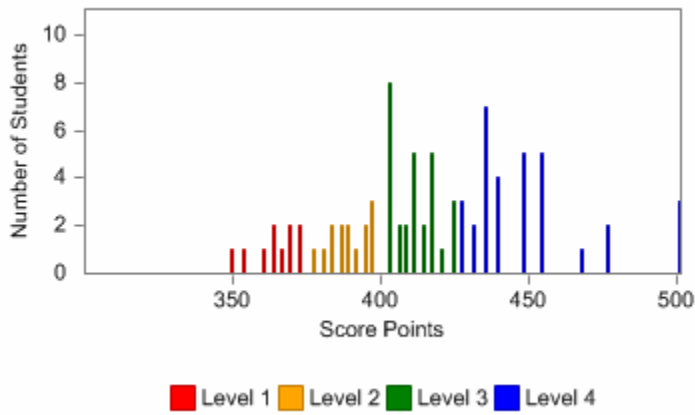
### 3rd Grade Math Quartile Distribution



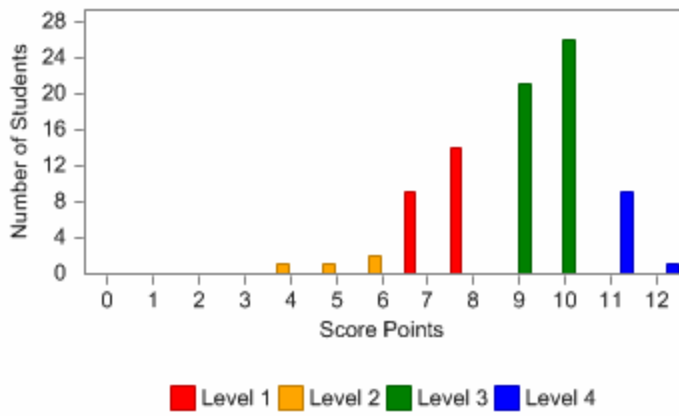
### 2004-05 4th Grade Reading Score



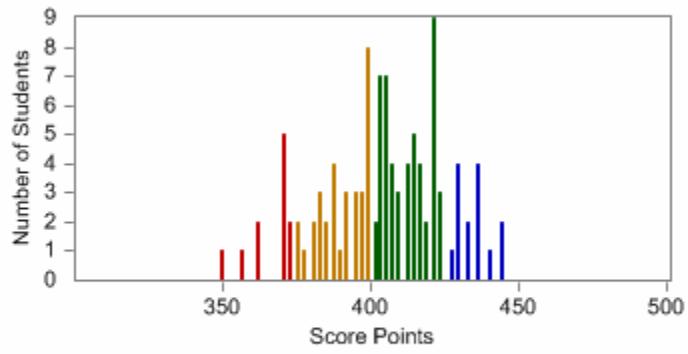
### 2004-05 4th Grade Math Score



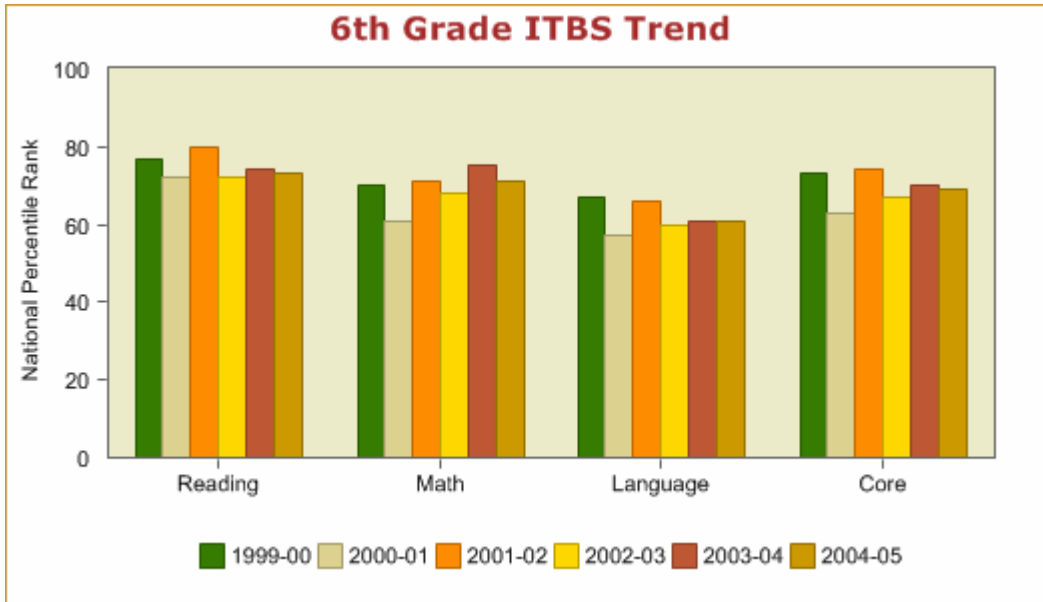
### 2004-05 4th Grade Writing Score



### 2004-05 5th Grade Science Score



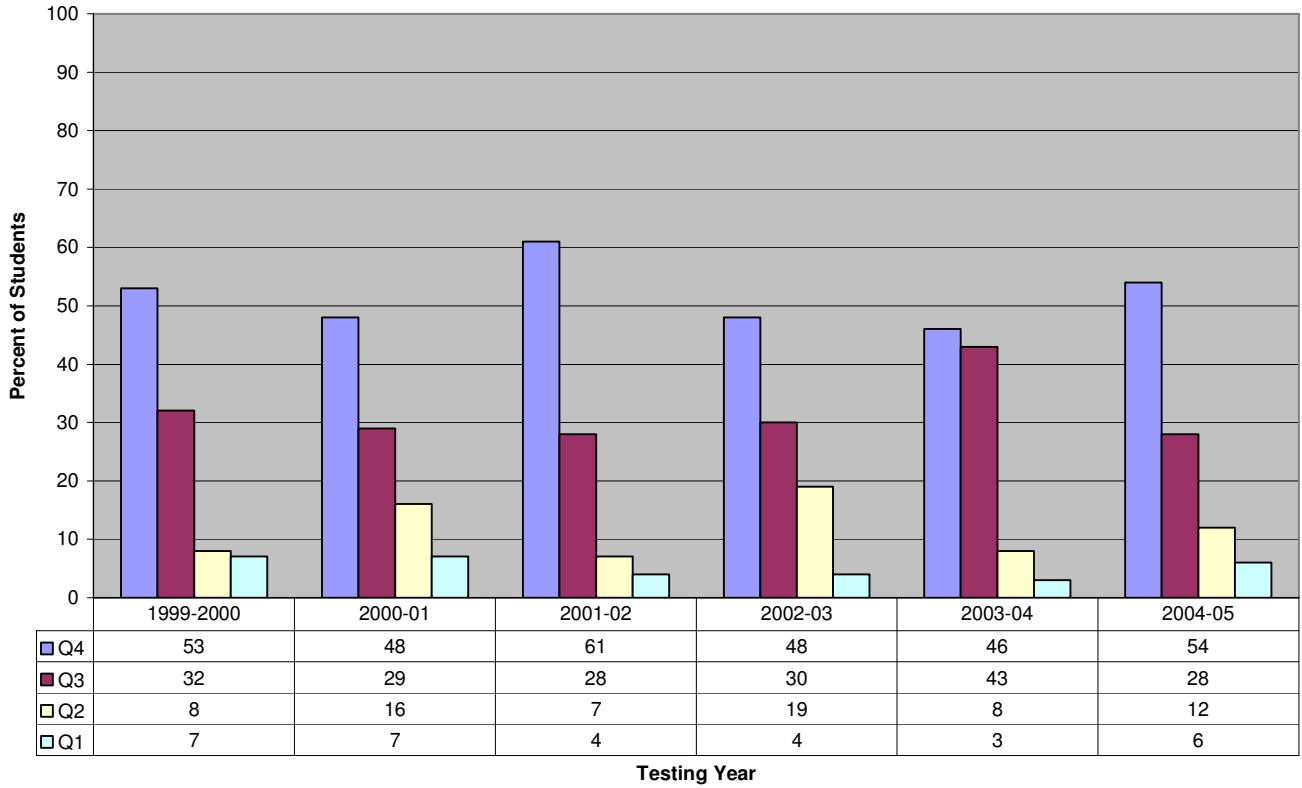
Level 1 Level 2 Level 3 Level 4



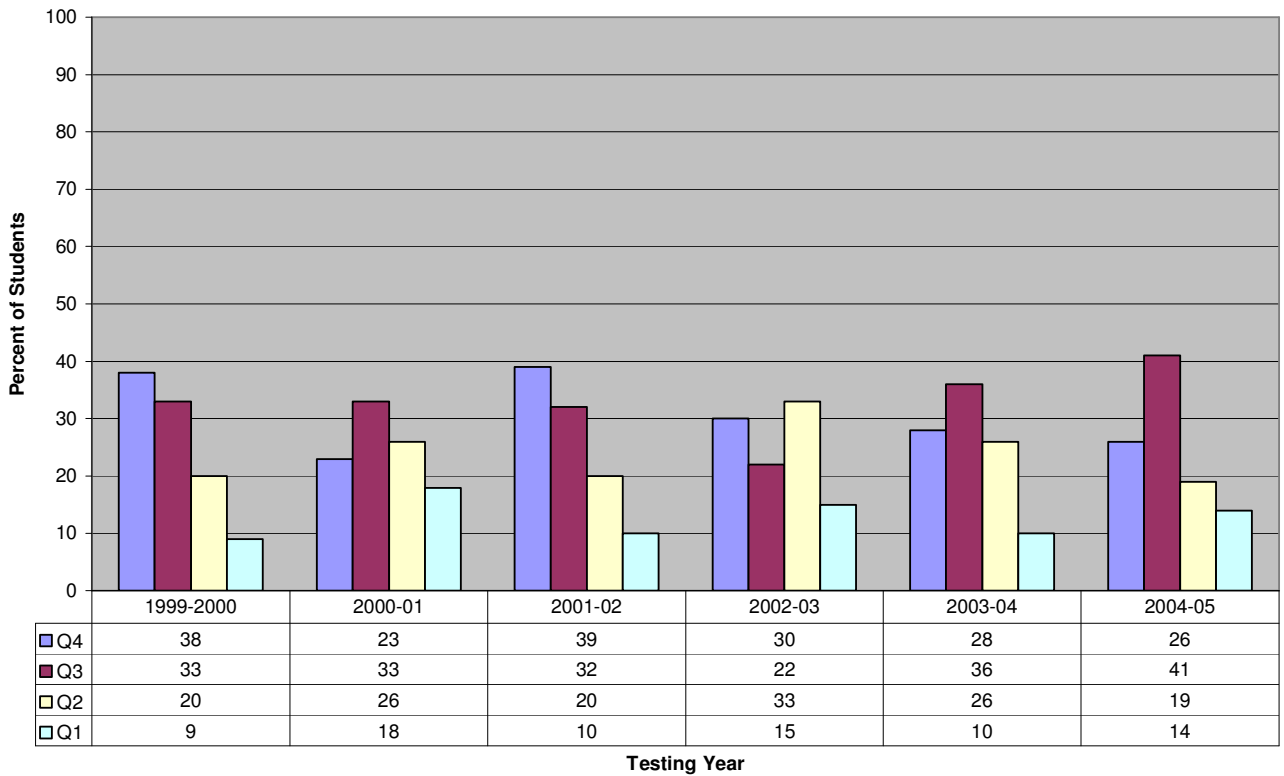
Grade 6	1999-00	2000-01	2001-02	2002-03	2003-04	2004-05
Reading	77	72	80	72	74	73
Math	70	61	71	68	75	71
Language	67	57	66	60	61	61
Core	73	63	74	67	70	69

6th Grade ITBS	Reading	Mathematics	Language	Core Total
<b>National Percentile Rank (NPR):</b>	73	71	61	69
Number of Students Tested:	110	107	110	106
Percent Tested:	98%	96%	98%	95%
<b>Percent Per Quartile:</b>				
Q4 (76th to 99th Percentile):	54%	47%	26%	42%
Q3 (51st to 75th Percentile):	28%	27%	41%	35%
Q2 (26th to 50th Percentile):	12%	16%	19%	20%
Q1 (1st to 25th Percentile):	6%	10%	14%	4%

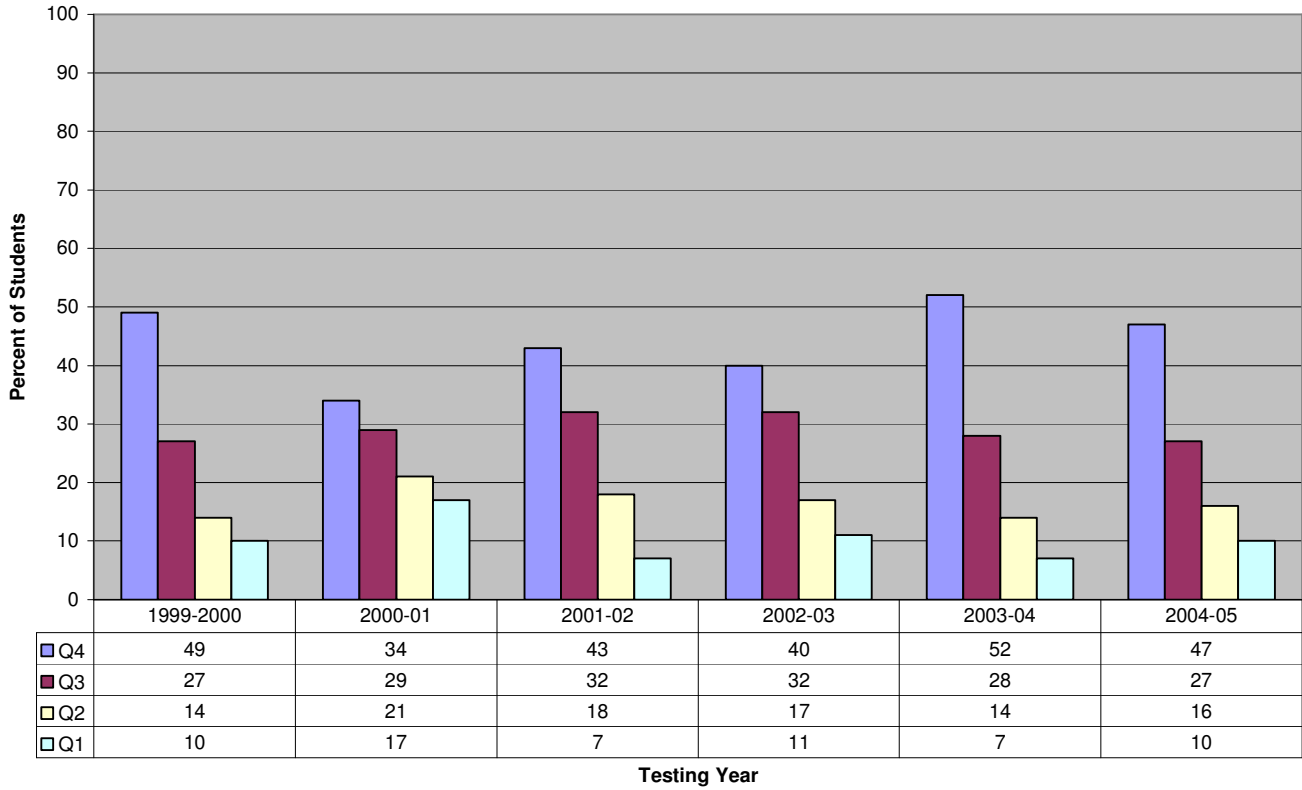
### 6th Grade Reading Quartile Distribution



### 6th Language Quartile Distribution

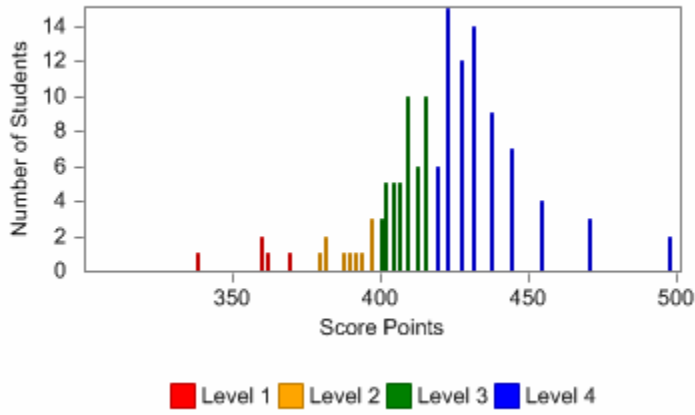


### 6th Grade Math Quartile Distribution

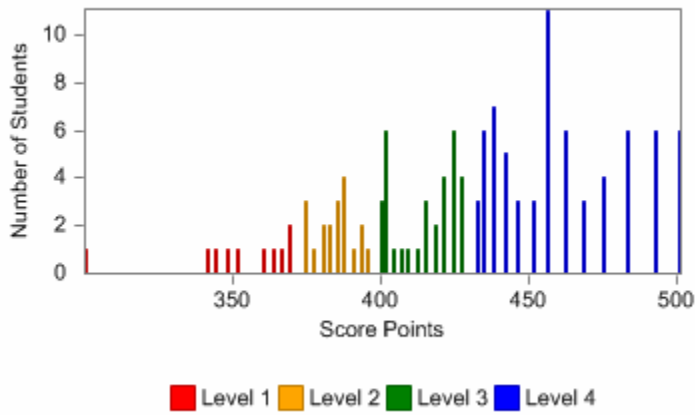


Testing Year

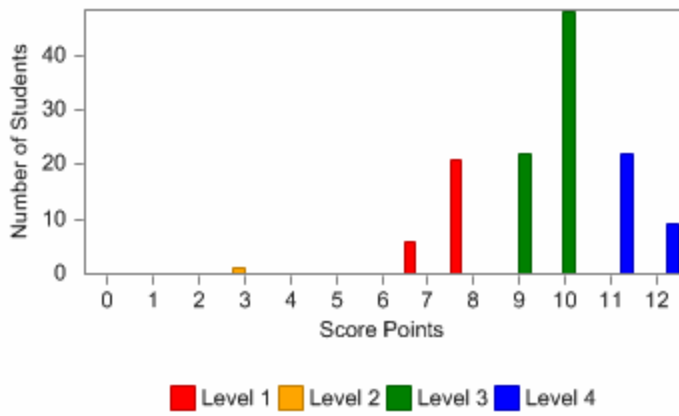
### 2004-05 7th Grade Reading Score



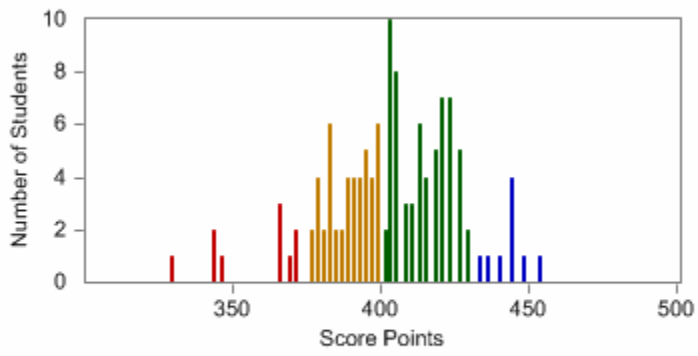
### 2004-05 7th Grade Math Score



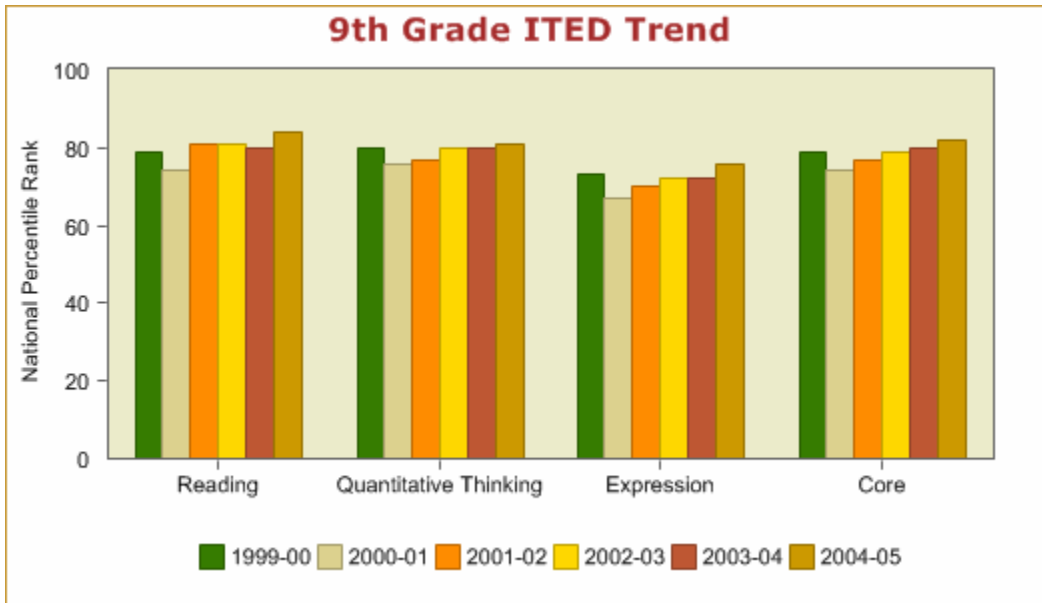
### 2004-05 7th Grade Writing Score



### 2004-05 8th Grade Science Score



■ Level 1 ■ Level 2 ■ Level 3 ■ Level 4

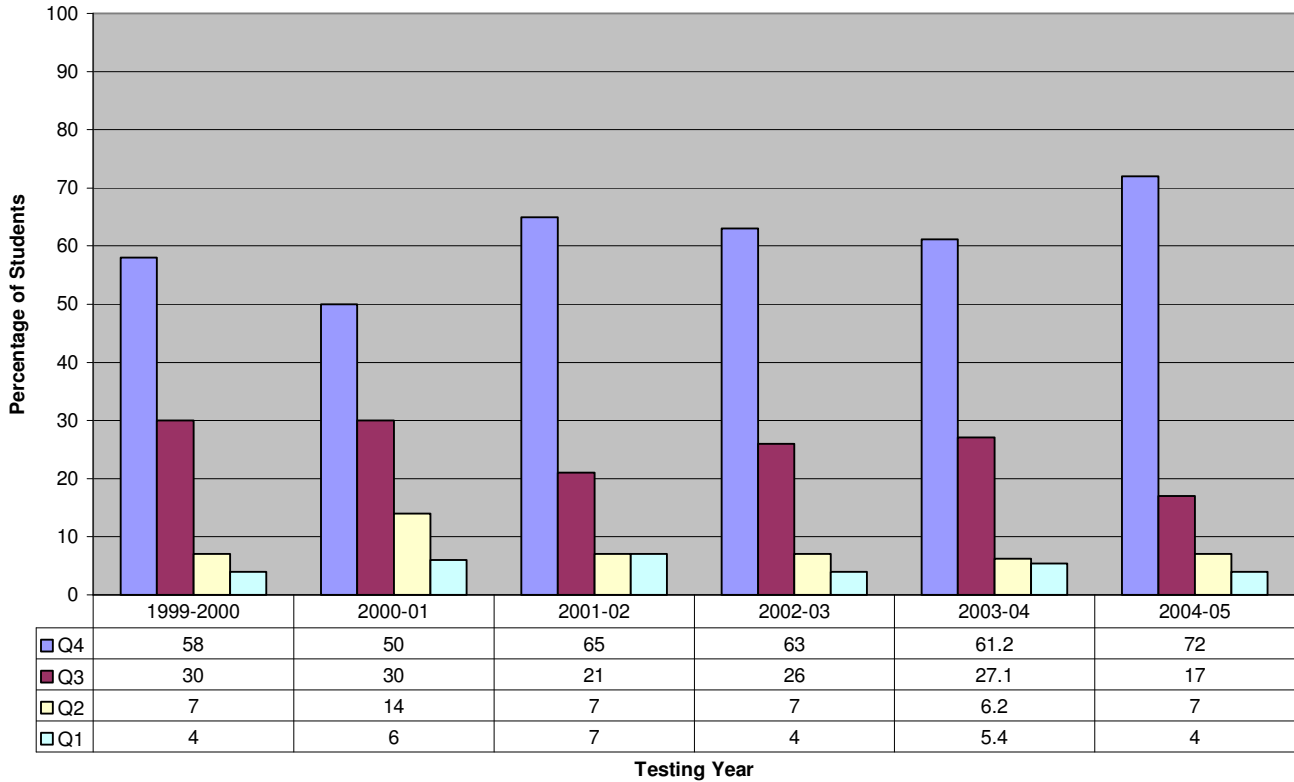


Grade 9	1999-00	2000-01	2001-02	2002-03	2003-04	2004-05
Reading	79	74	81	81	80	84
Quantitative Thinking	80	76	77	80	80	81
Expression	73	67	70	72	72	76
Core	79	74	77	79	80	82

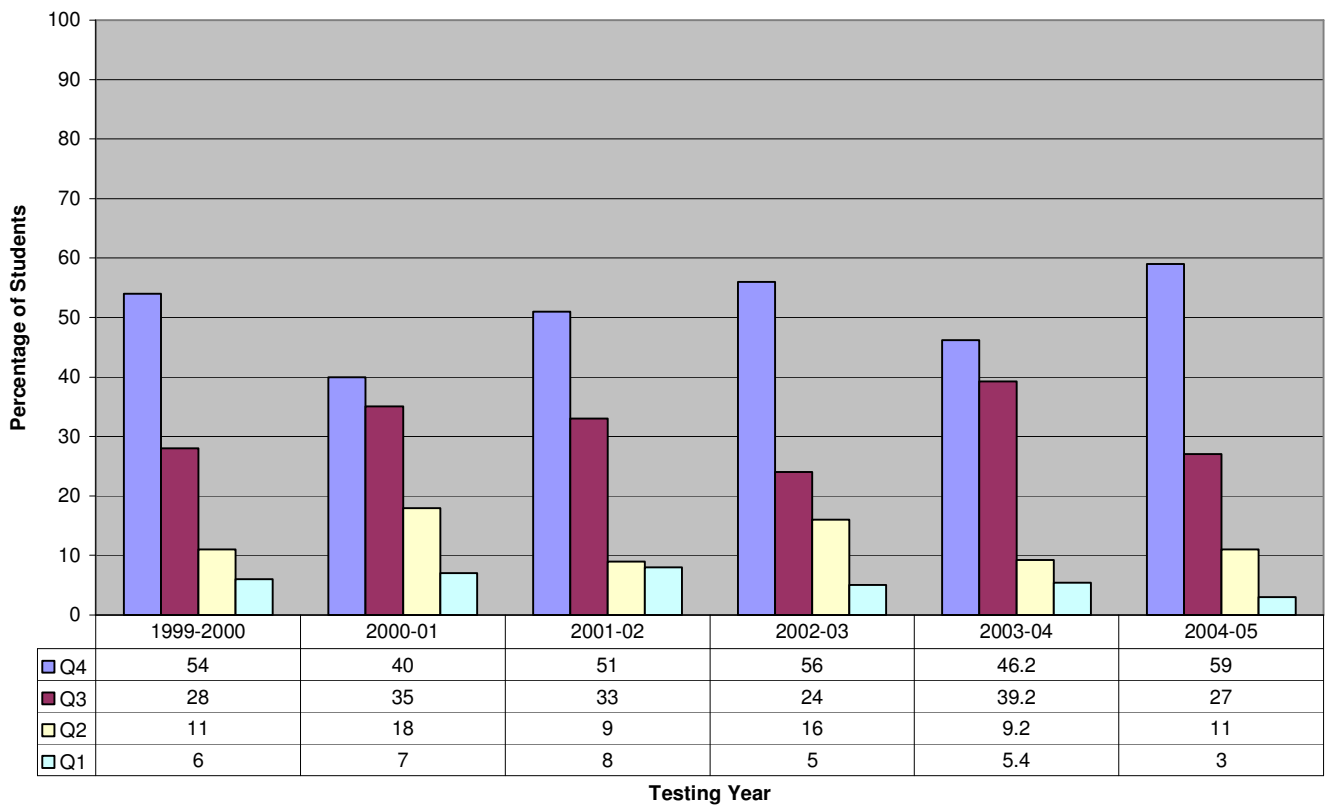
  

9th Grade ITED	Reading	Mathematics	Expression	Core Total
<b>National Percentile Rank (NPR):</b>	84	81	76	82
Number of Students Tested:	124	124	123	123
Percent Tested:	99%	99%	98%	98%
<b>Percent Per Quartile:</b>				
Q4 (76th to 99th Percentile):	72%	68%	59%	66%
Q3 (51st to 75th Percentile):	17%	21%	27%	24%
Q2 (26th to 50th Percentile):	7%	8%	11%	7%
Q1 (1st to 25th Percentile):	4%	3%	3%	4%

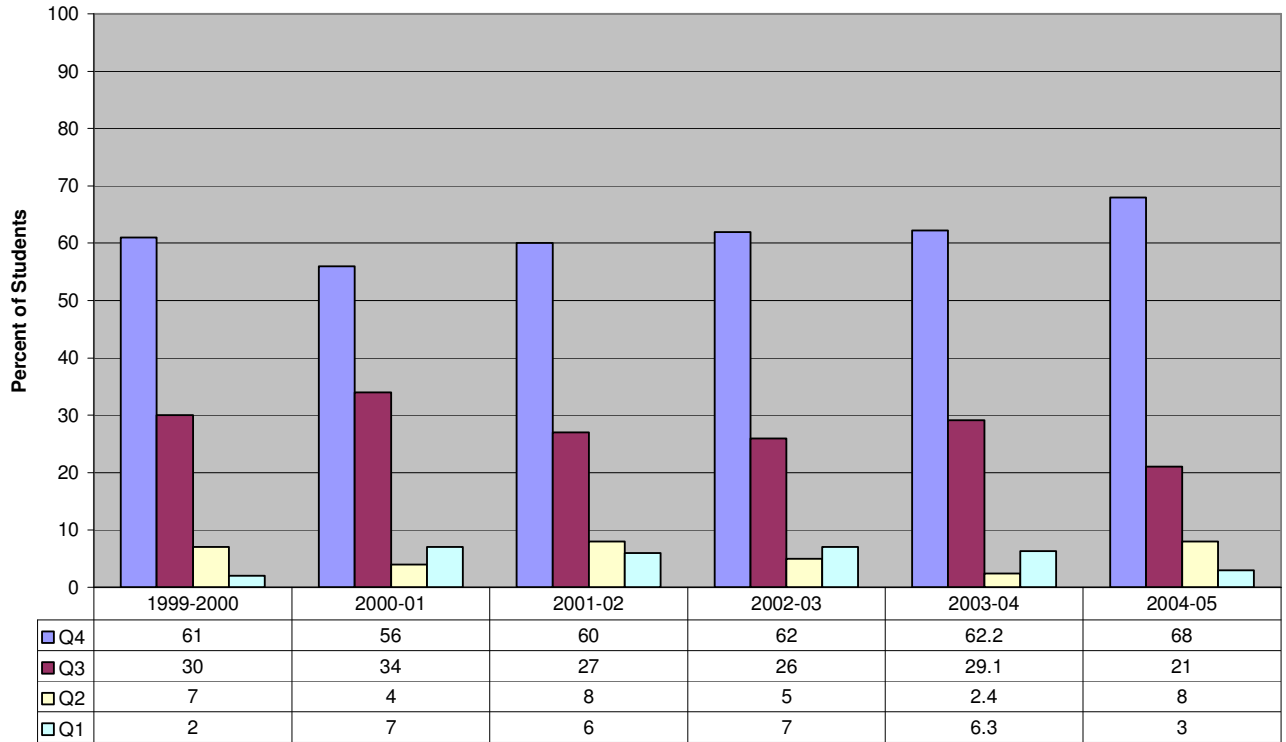
### 9th Grade Reading Quartile Distribution



### 9th Grade Expression Quartile Distribution

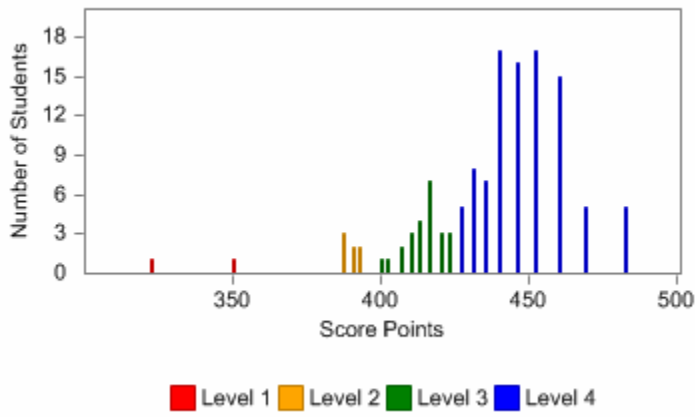


### 9th Grade Quantitative Thinking Quartile Distribution

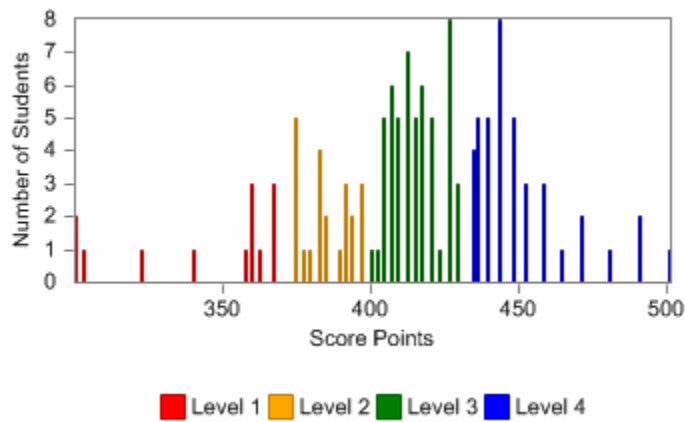


Testing Year

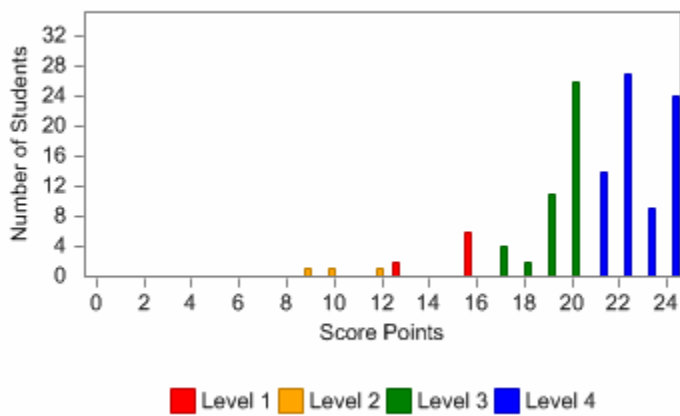
### 2004-05 10th Grade Reading Score



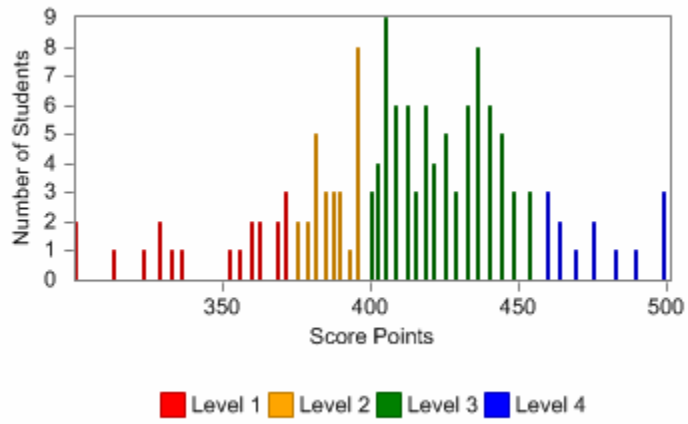
### 2004-05 10th Grade Math Score



### 2004-05 10th Grade Writing Score

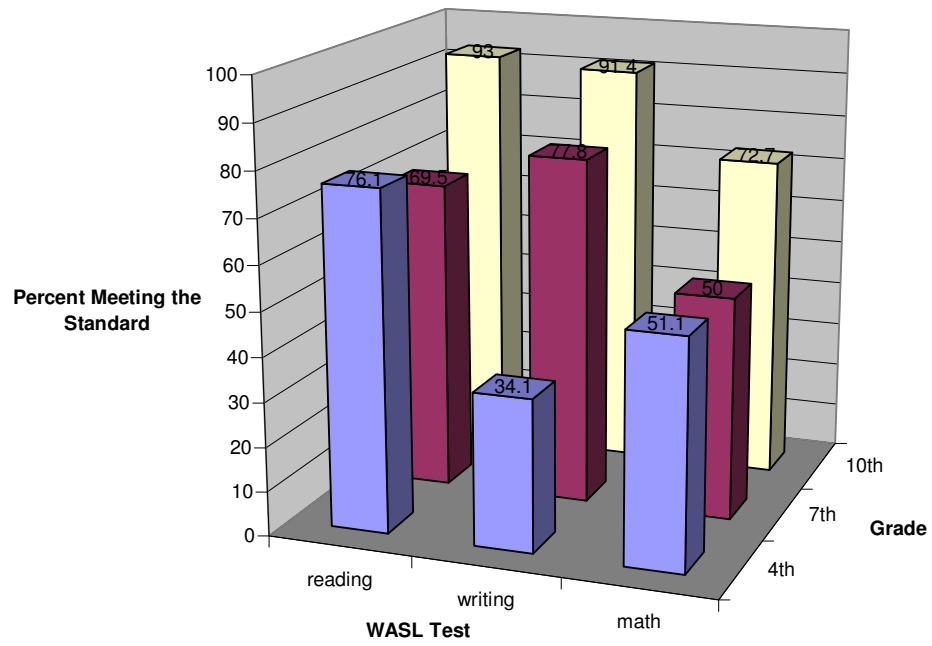


## 2004-05 10th Grade Science Score



Cohort Data

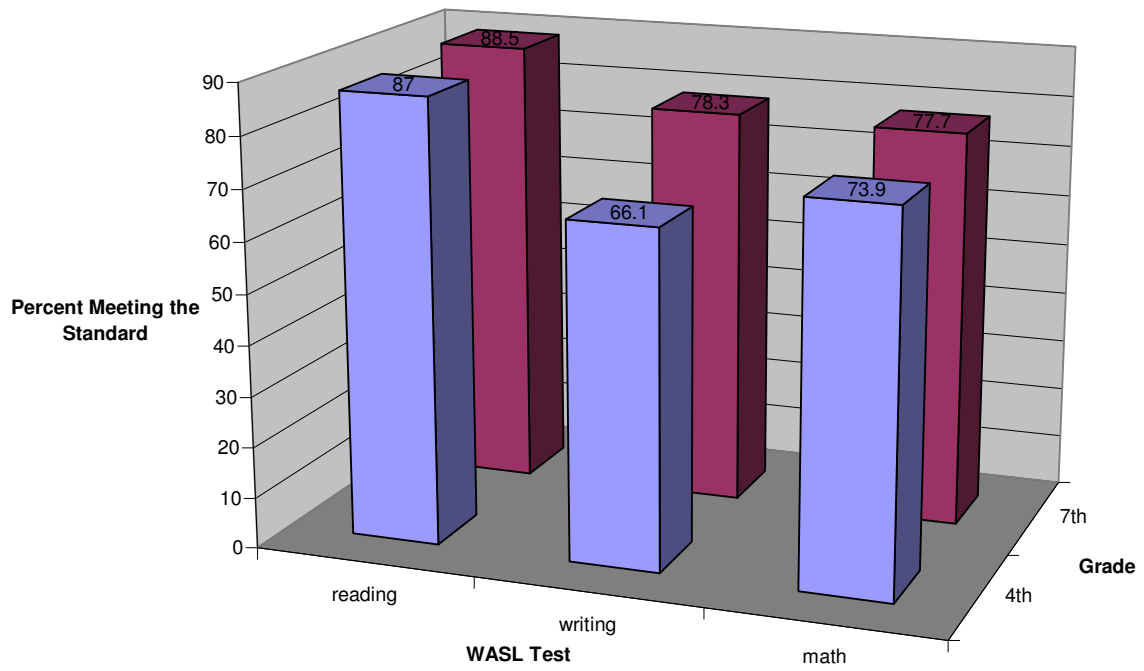
Cohort E (1999/2002/2005): Adjusted



	reading	writing	math
4th	76.1	34.1	51.1
7th	69.5	77.8	50
10th	93	91.4	72.7

Cohort Data

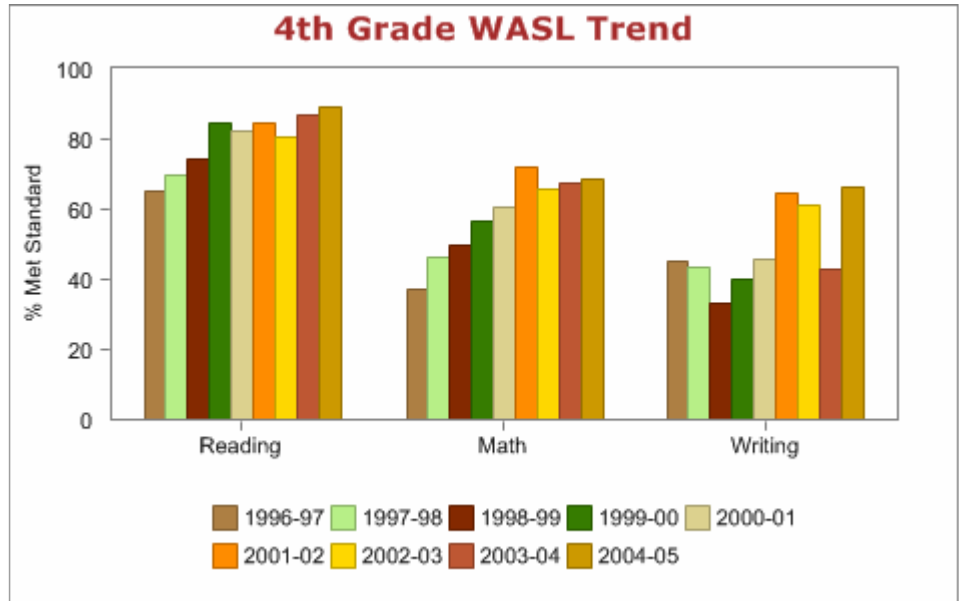
Cohort H(2002/2005): Adjusted



	reading	writing	math
4th	87	66.1	73.9
7th	88.5	78.3	77.7

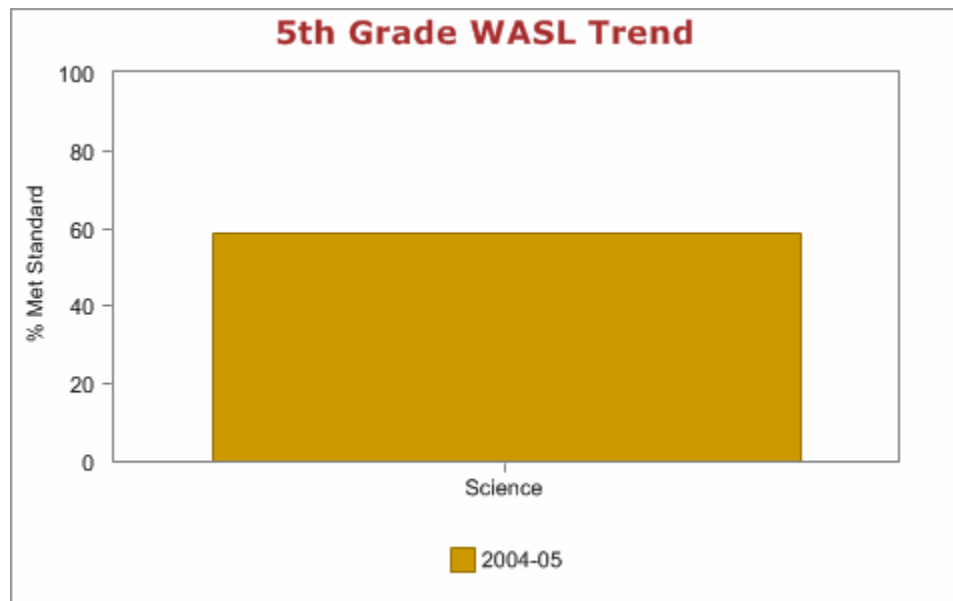
**4th Grade WASL**

Year	Reading	Math	Writing
<a href="#">1996-97</a>	65.1%	37.3%	44.9%
<a href="#">1997-98</a>	69.5%	46.2%	43.2%
<a href="#">1998-99</a>	74.5%	49.6%	33.3%
<a href="#">1999-00</a>	84.8%	56.5%	40.2%
<a href="#">2000-01</a>	82.5%	60.8%	45.8%
<a href="#">2001-02</a>	84.7%	72.0%	64.4%
<a href="#">2002-03</a>	80.6%	65.7%	61.1%
<a href="#">2003-04</a>	86.7%	67.6%	42.9%
<a href="#">2004-05</a>	89.2%	68.7%	66.3%



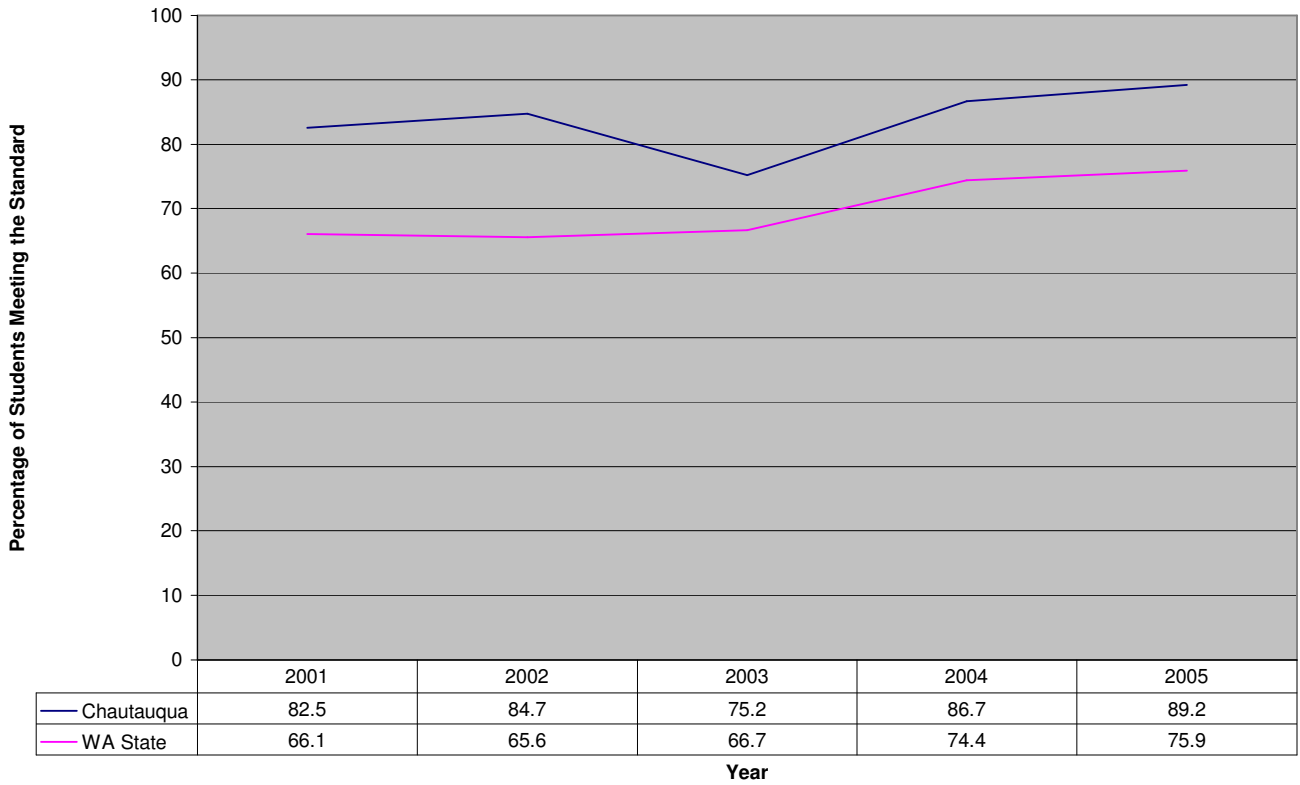
**5th Grade WASL**

Year	Science
<a href="#">2004-05</a>	59.0%



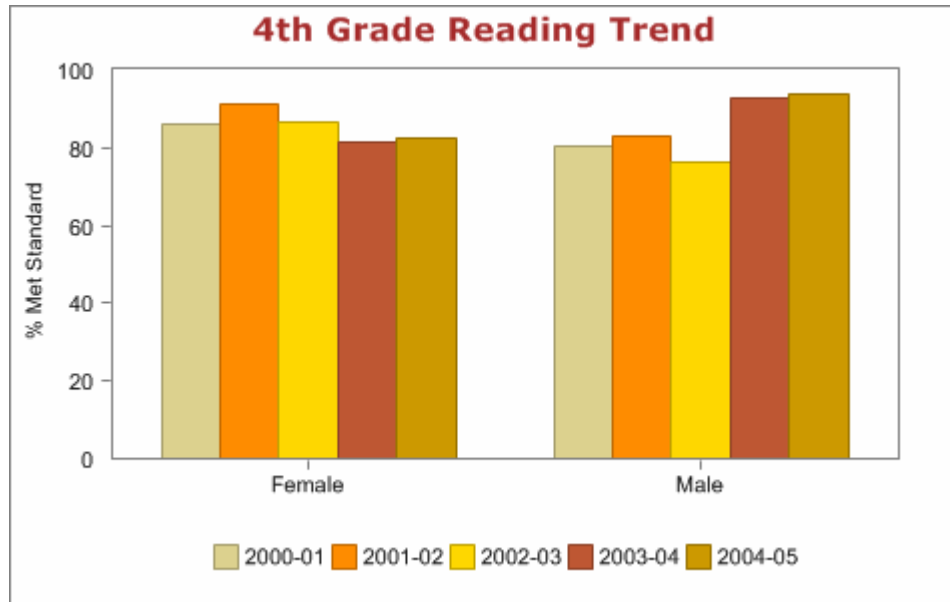
Chautauqua Elementary:

4th Grade WASL Trend: Reading

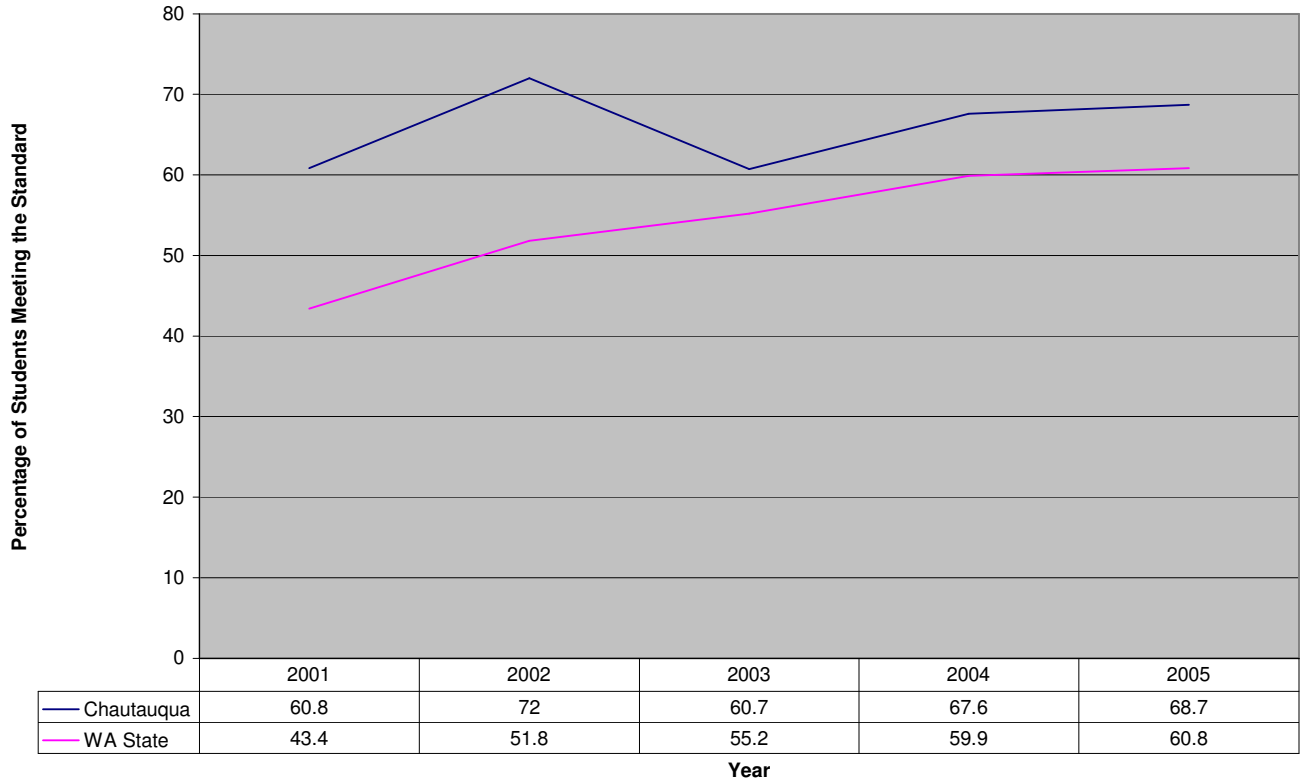


Grade 4 Reading

Year	Female	Male
2000-01	86.0%	80.6%
2001-02	91.1%	83.1%
2002-03	86.7%	76.2%
2003-04	81.7%	93.0%
2004-05	82.4%	93.9%

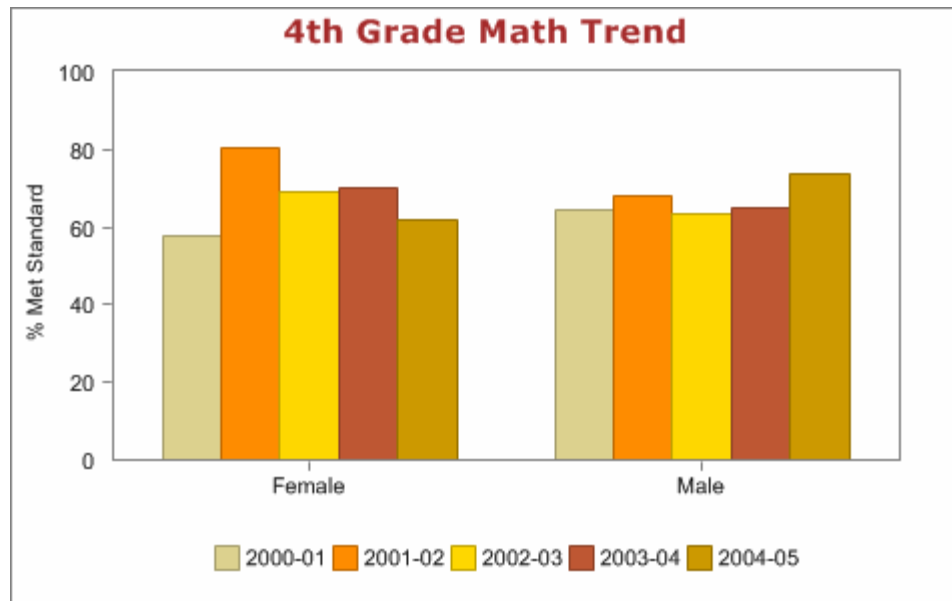


### 4th Grade WASL Trend: Mathematics



### Grade 4 Math

Year	Female	Male
2000-01	57.9%	64.5%
2001-02	80.4%	67.8%
2002-03	68.9%	63.5%
2003-04	70.0%	65.1%
2004-05	61.8%	73.5%

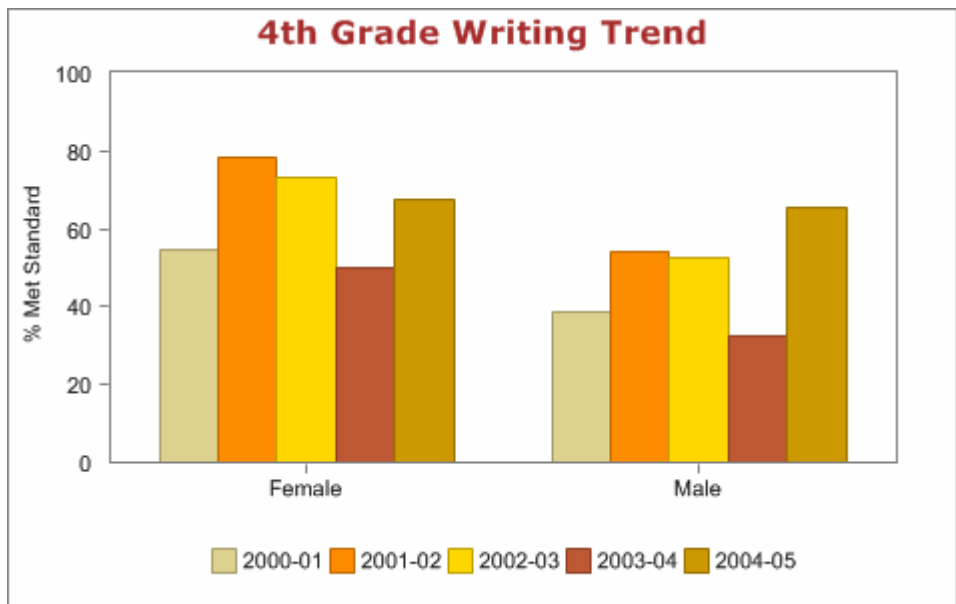


### 4th Grade WASL Trend: Writing



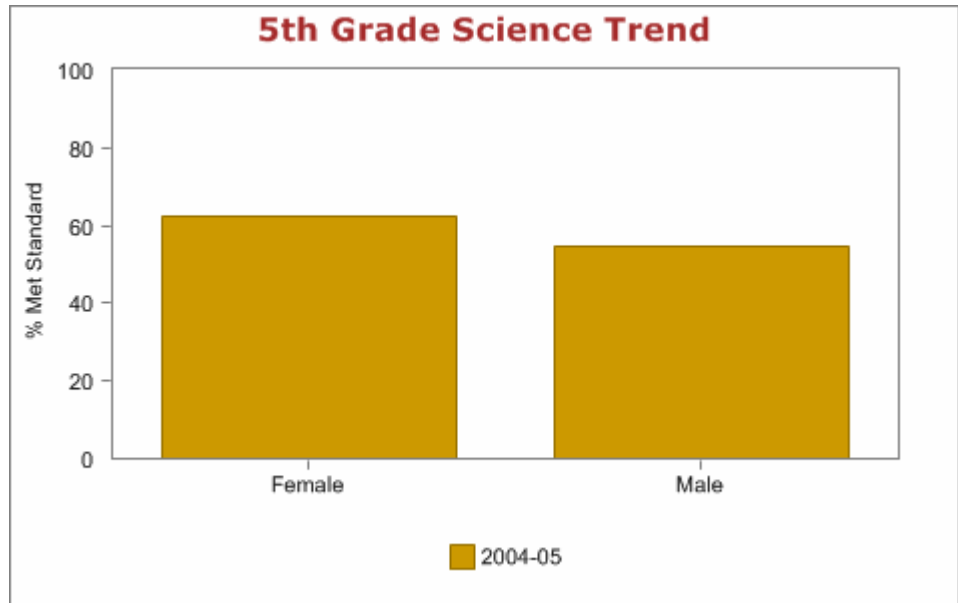
### Grade 4 Writing

Year	Female	Male
2000-01	54.4%	38.7%
2001-02	78.6%	54.2%
2002-03	73.3%	52.4%
2003-04	50.0%	32.6%
2004-05	67.6%	65.3%



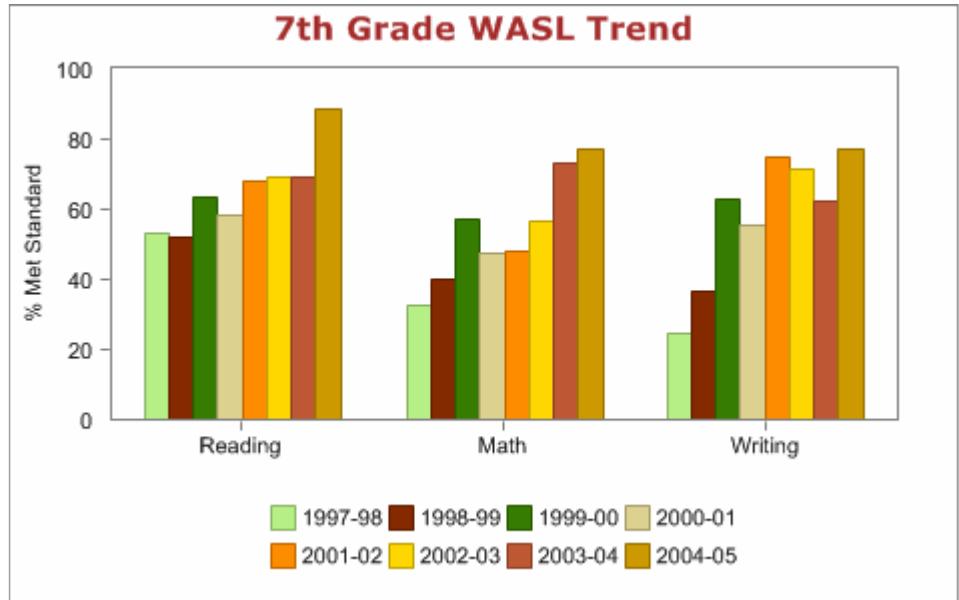
### Grade 5 Science

Year	Female	Male
2004-05	62.3%	54.5%



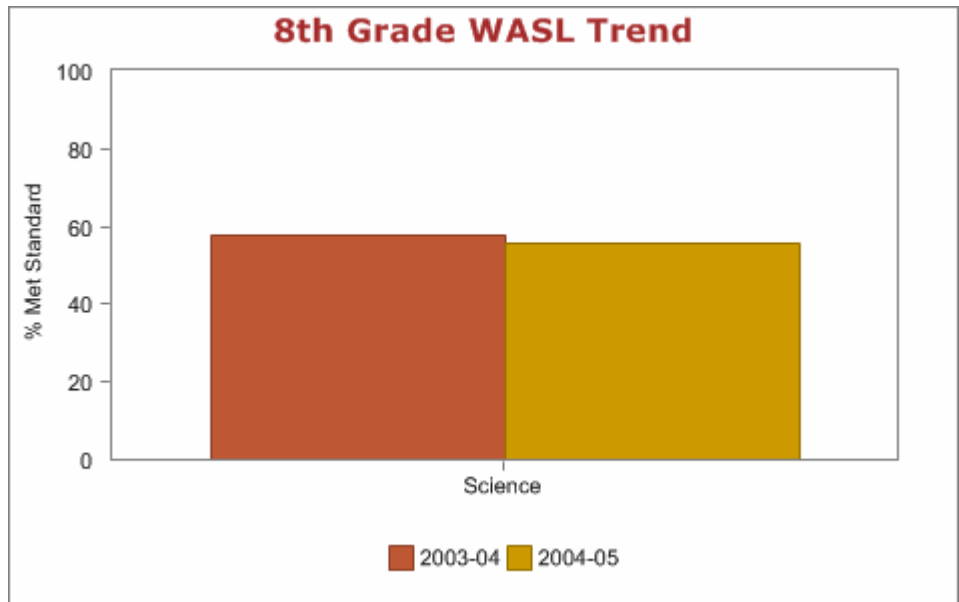
**7th Grade WASL**

Year	Reading	Math	Writing
<a href="#">1997-98</a>	53.0%	32.3%	24.8%
<a href="#">1998-99</a>	51.8%	40.1%	36.5%
<a href="#">1999-00</a>	63.7%	57.4%	62.6%
<a href="#">2000-01</a>	58.3%	47.4%	55.2%
<a href="#">2001-02</a>	67.9%	48.1%	74.8%
<a href="#">2002-03</a>	68.9%	56.6%	71.7%
<a href="#">2003-04</a>	69.2%	72.9%	62.3%
<a href="#">2004-05</a>	88.5%	77.1%	77.1%



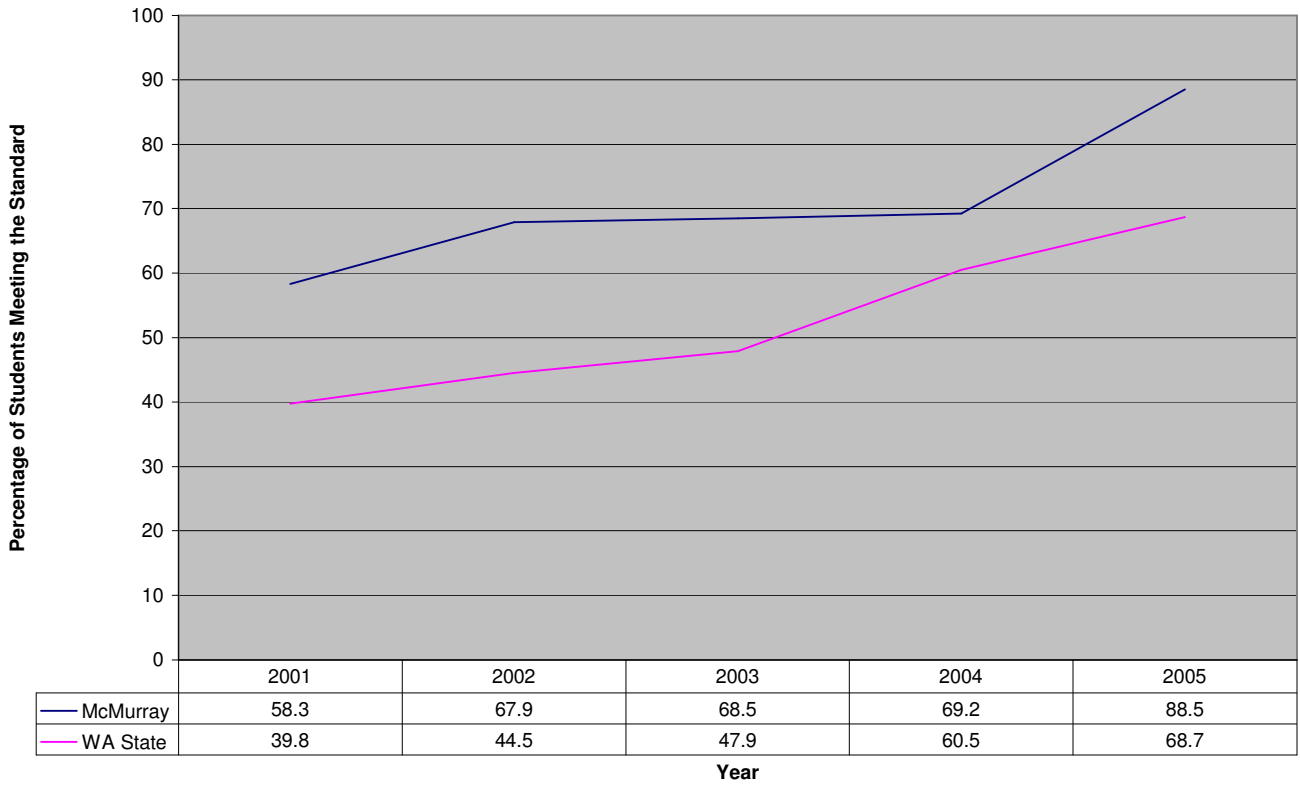
**8th Grade WASL**

Year	Science
<a href="#">2003-04</a>	57.5%
<a href="#">2004-05</a>	55.9%



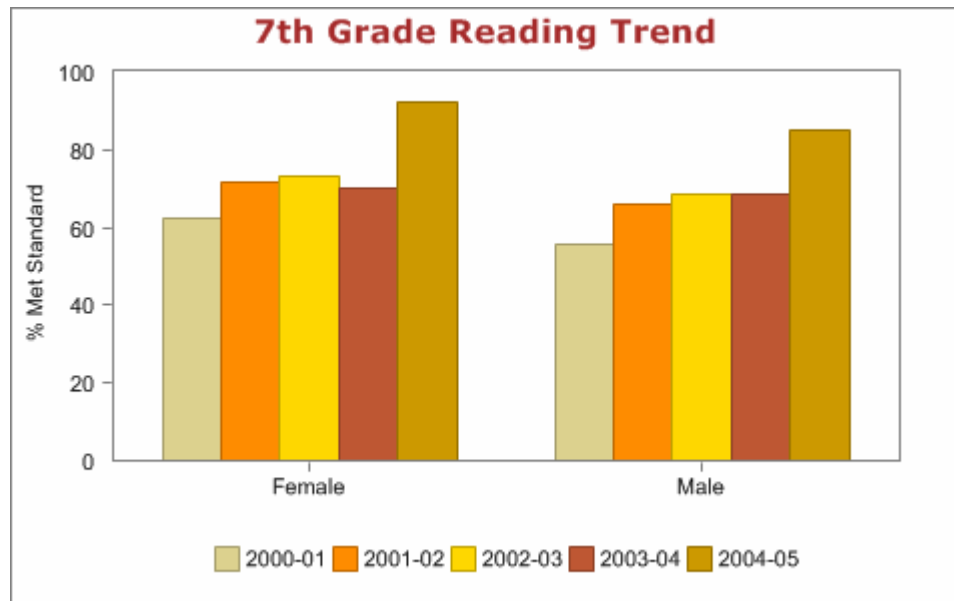
McMurray Middle School:

**7th Grade WASL Trend: Reading**

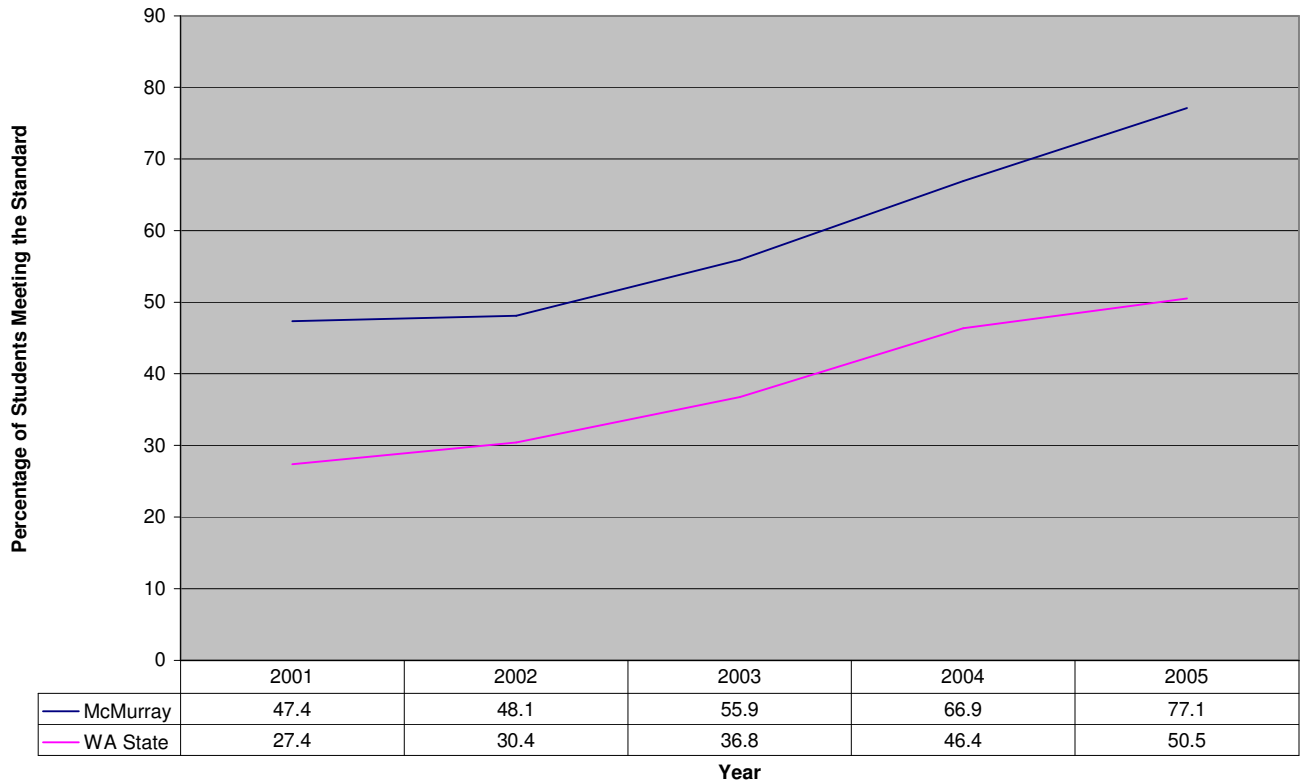


**Grade 7 Reading**

Year	Female	Male
2000-01	62.2%	55.7%
2001-02	71.9%	65.8%
2002-03	73.1%	68.6%
2003-04	70.1%	68.3%
2004-05	92.2%	85.1%

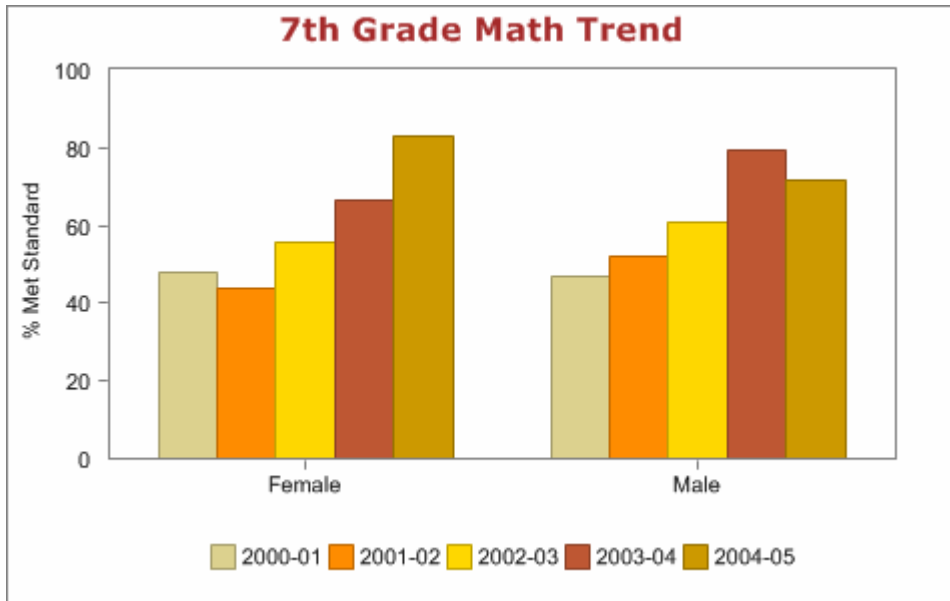


### 7th Grade WASL Trend: Mathematics

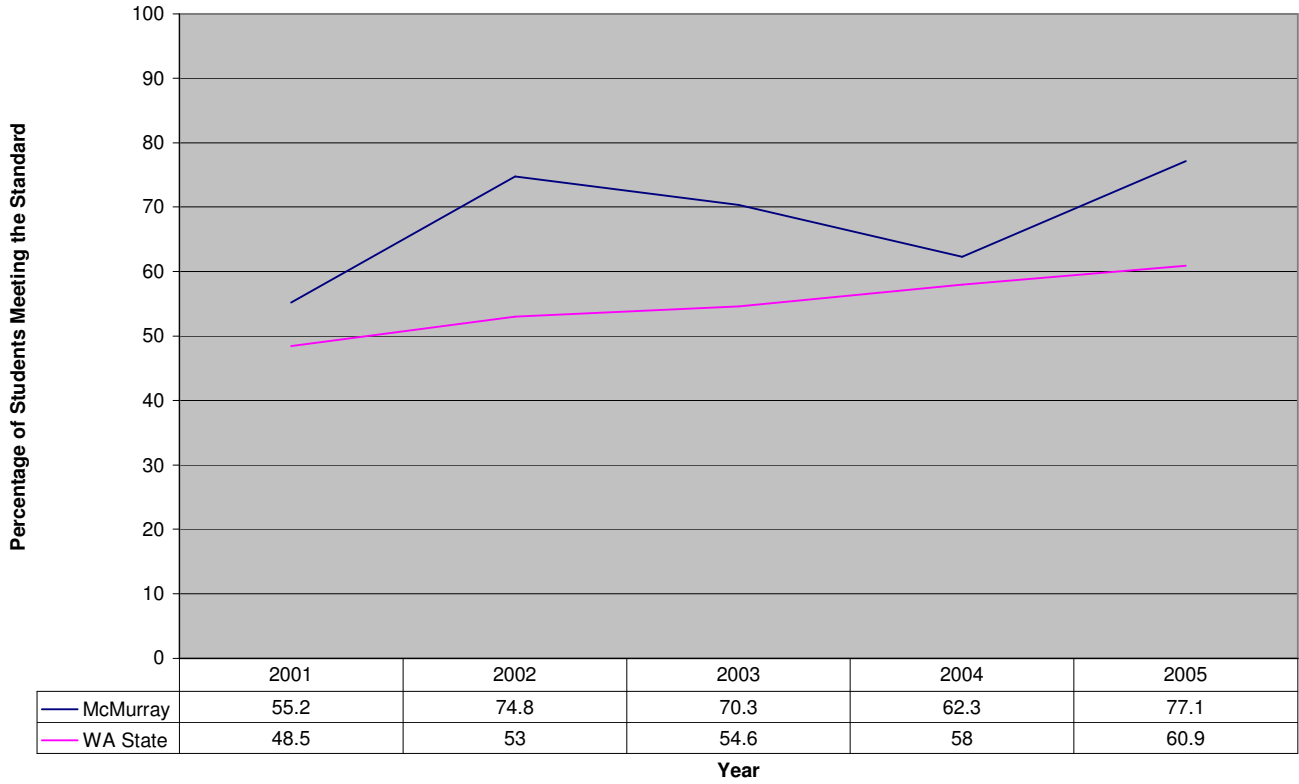


### Grade 7 Math

Year	Female	Male
2000-01	47.8%	47.1%
2001-02	43.9%	52.1%
2002-03	55.8%	60.8%
2003-04	66.7%	79.4%
2004-05	82.8%	71.6%

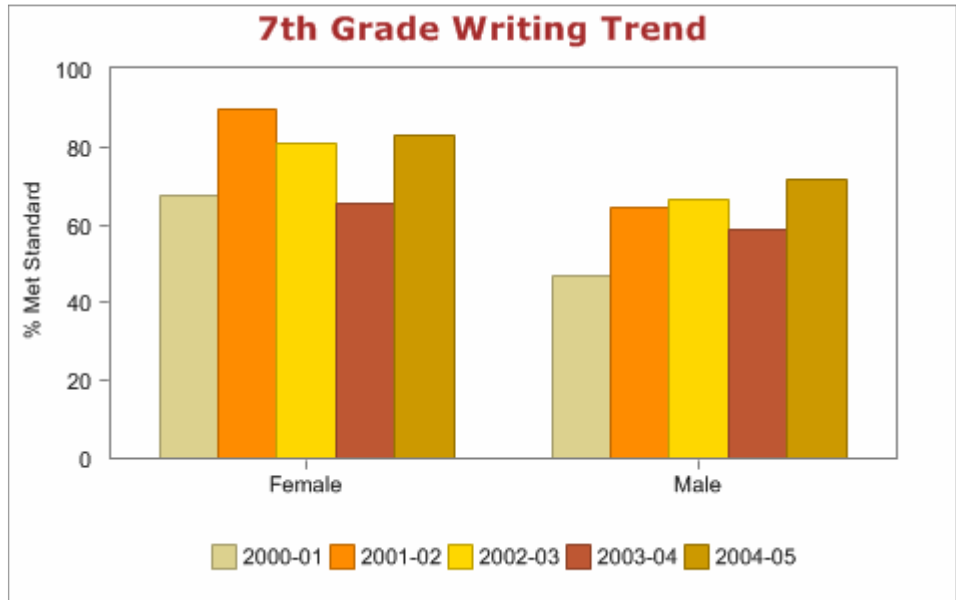


### 7th Grade WASL Trend: Writing



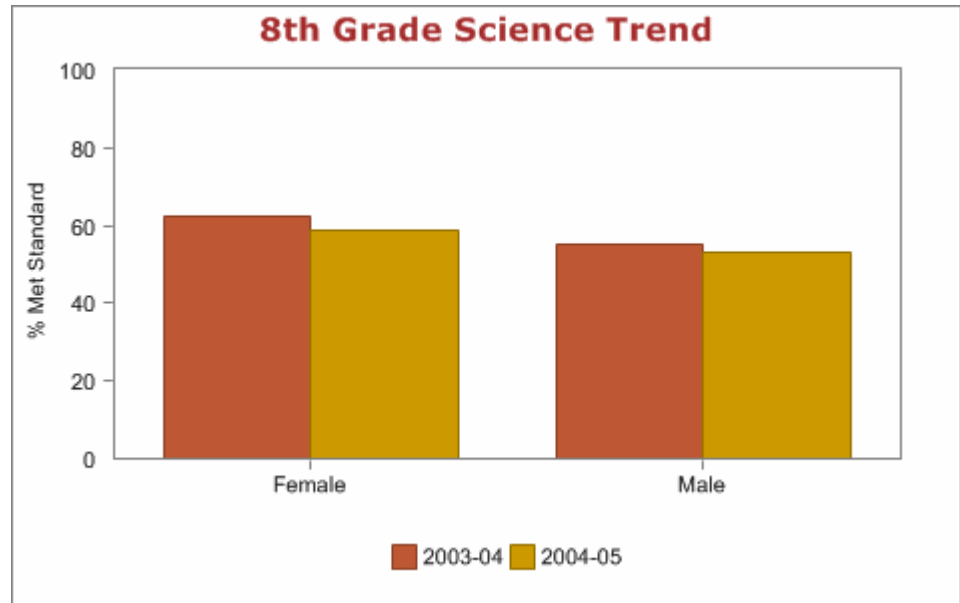
### Grade 7 Writing

Year	Female	Male
2000-01	67.4%	47.1%
2001-02	89.5%	64.4%
2002-03	80.8%	66.7%
2003-04	65.7%	58.7%
2004-05	82.8%	71.6%



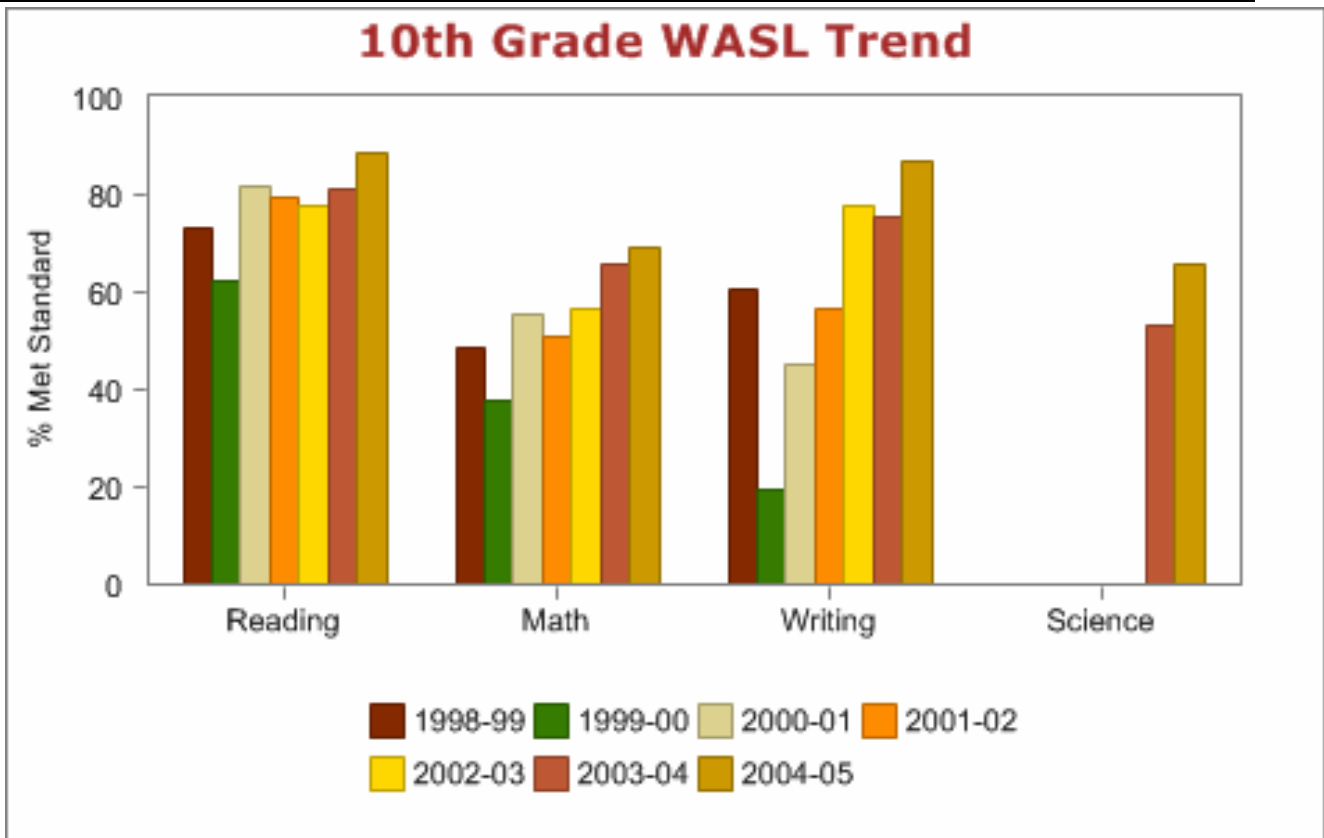
### Grade 8 Science

Year	Female	Male
2003-04	62.5%	55.4%
2004-05	58.7%	53.1%

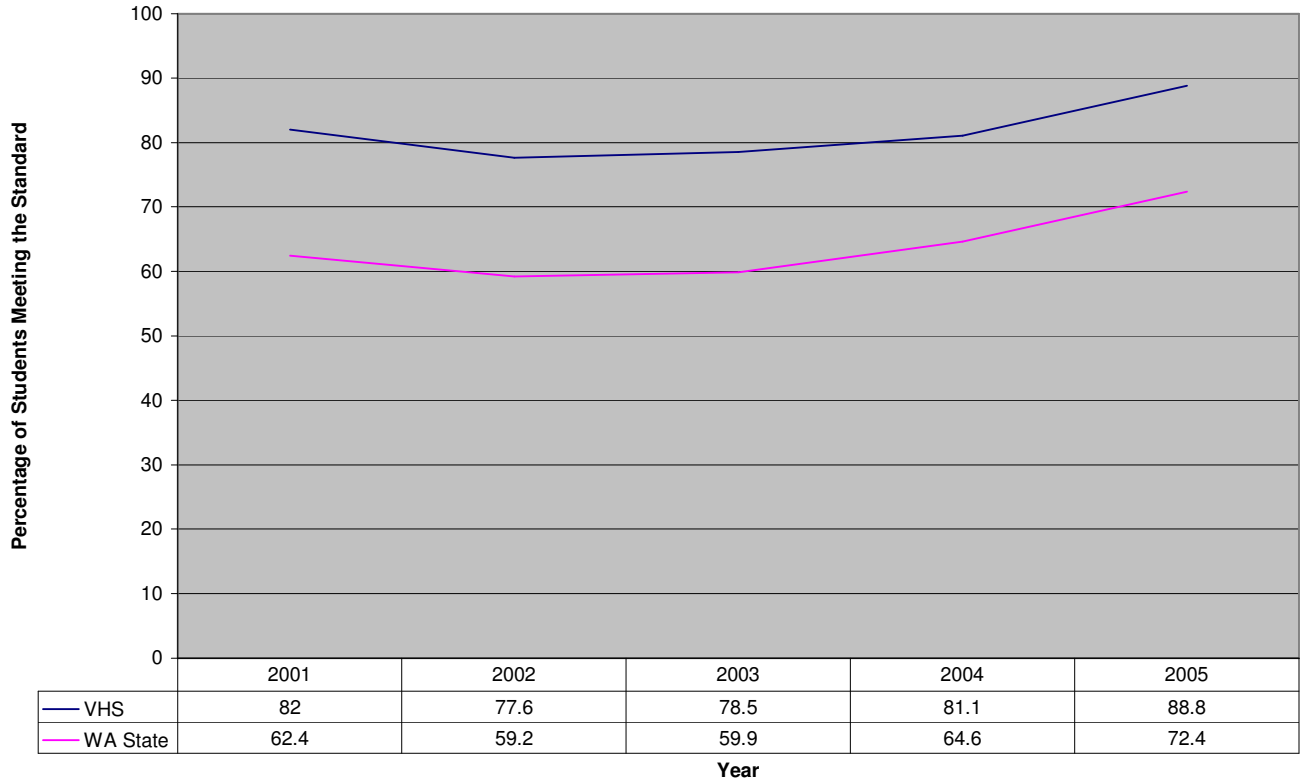


**10th Grade WASL**

Year	Reading	Math	Writing	Science
<a href="#">1998-99</a>	73.2%	48.4%	60.6%	
<a href="#">1999-00</a>	62.1%	37.9%	19.3%	
<a href="#">2000-01</a>	81.8%	55.5%	45.3%	
<a href="#">2001-02</a>	79.4%	50.8%	56.3%	
<a href="#">2002-03</a>	77.5%	56.5%	77.5%	
<a href="#">2003-04</a>	81.1%	65.5%	75.4%	53.3%
<a href="#">2004-05</a>	88.8%	69.4%	86.7%	65.9%

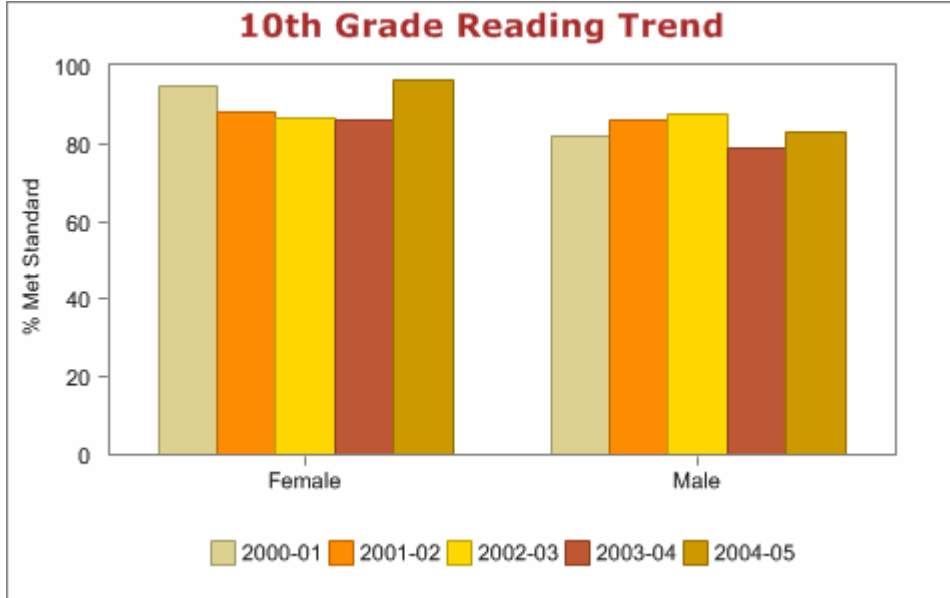


### 10th Grade WASL Trend: Reading

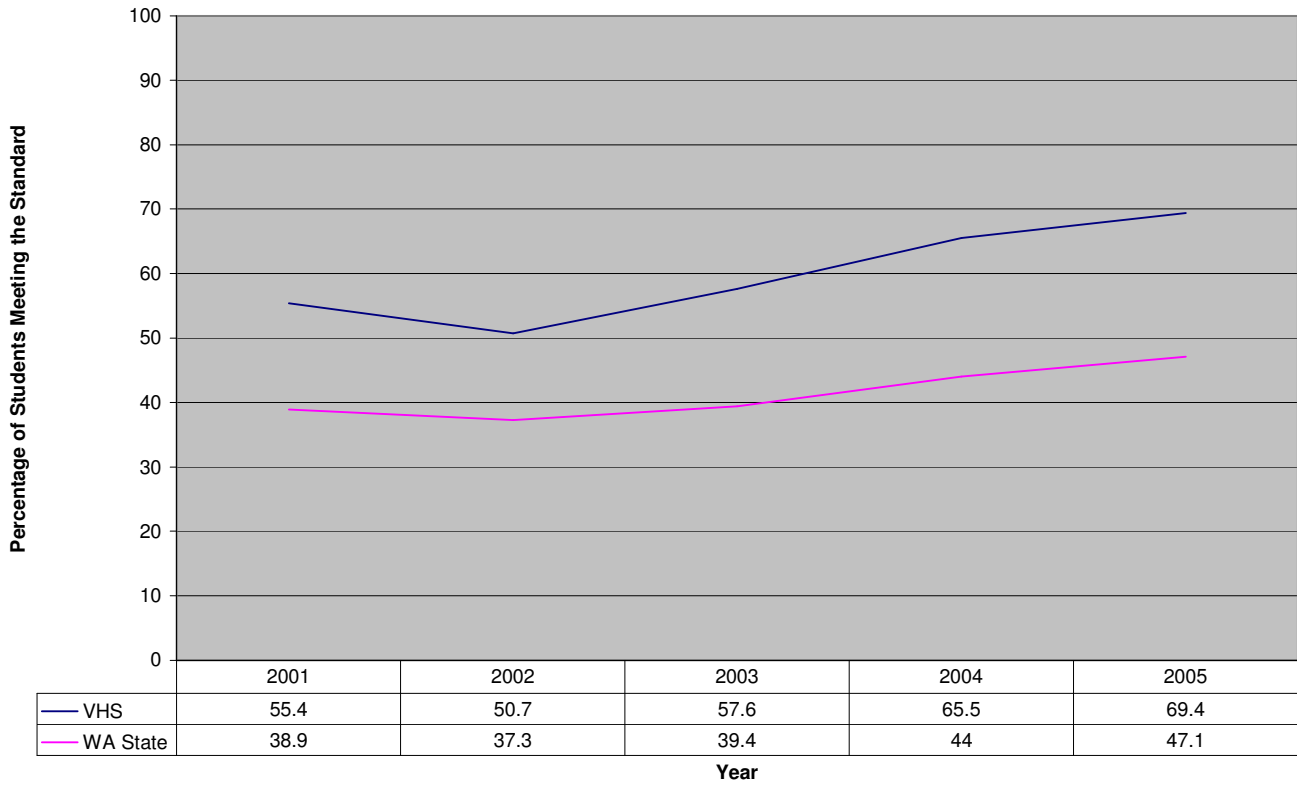


### Grade 10 Reading

Year	Female	Male
2000-01	94.9%	82.1%
2001-02	88.2%	85.9%
2002-03	86.4%	87.7%
2003-04	86.2%	79.0%
2004-05	96.6%	82.9%

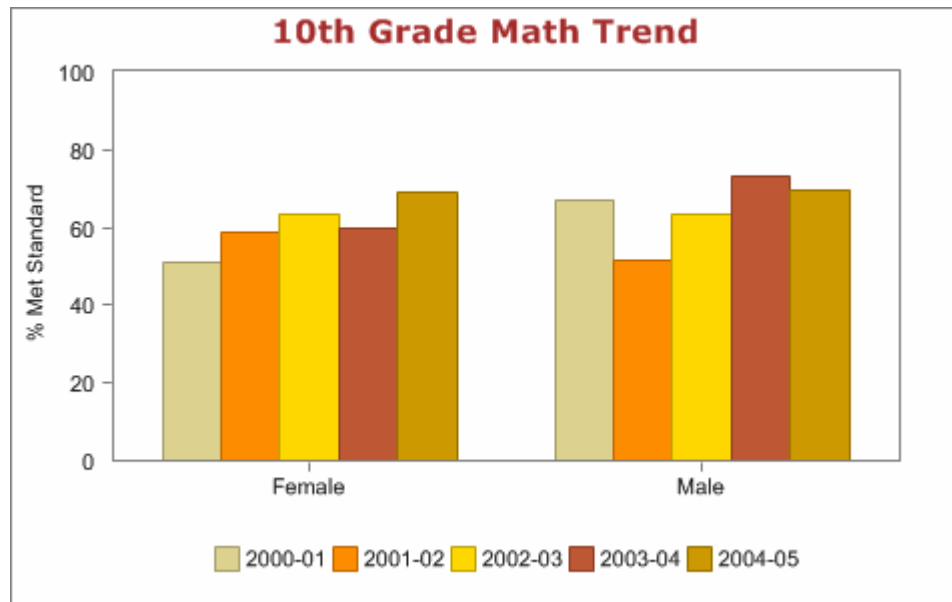


### 10th Grade WASL Trend: Math

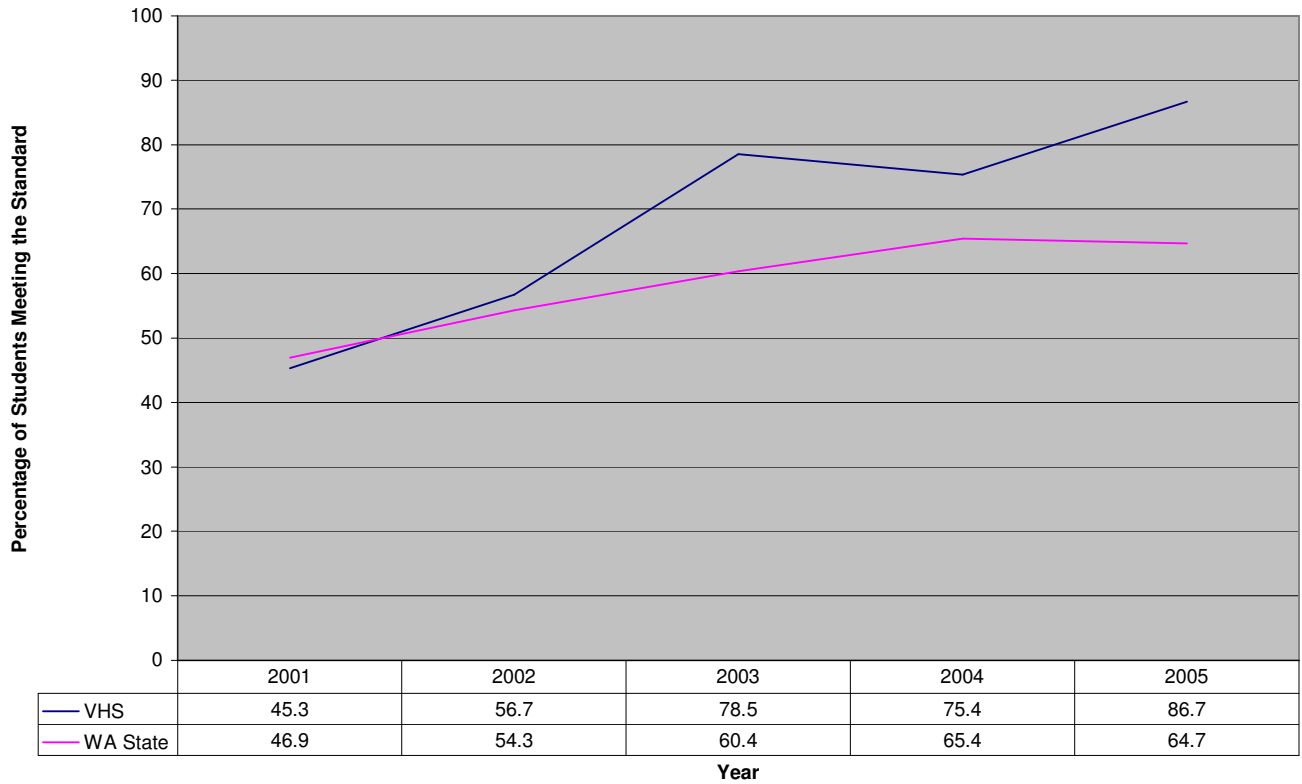


### Grade 10 Math

Year	Female	Male
2000-01	50.8%	67.2%
2001-02	58.8%	51.6%
2002-03	63.6%	63.2%
2003-04	59.6%	73.3%
2004-05	69.0%	69.7%

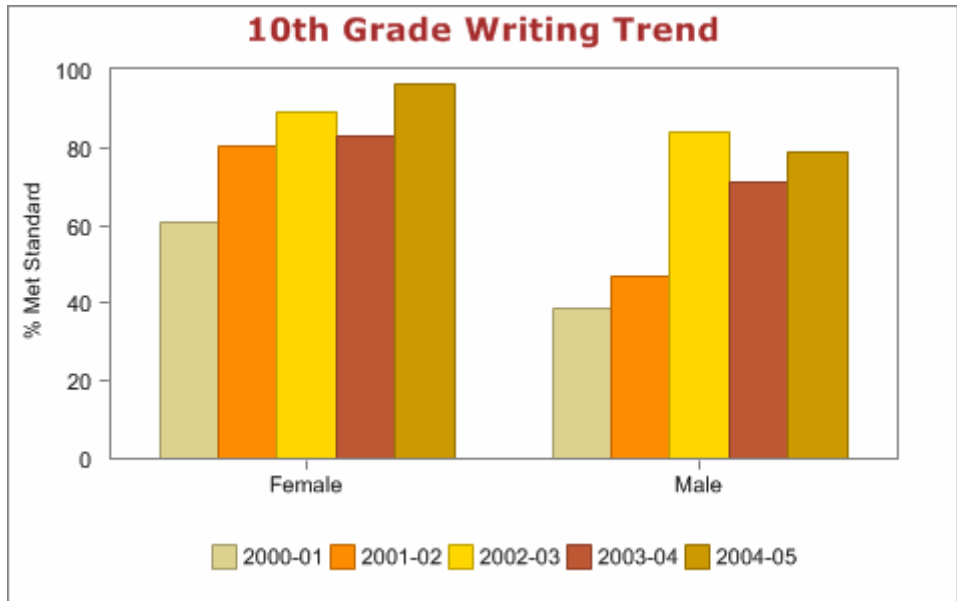


### 10th Grade WASL Trend: Writing



### Grade 10 Writing

Year	Female	Male
2000-01	61.0%	38.8%
2001-02	80.4%	46.9%
2002-03	89.4%	84.2%
2003-04	82.8%	71.0%
2004-05	96.6%	78.9%



### Grade 10 Science

Year	Female	Male
2003-04	51.7%	56.5%
2004-05	64.4%	67.1%

